



THE OFFICIAL MATCHDAY MAGAZINE OF PORT VALE FOOTBALL CLUB | £3.00

# VALE MAG

**v SWINDON TOWN**

SATURDAY 11TH MARCH 2017

KICK-OFF 3.00PM



**BRADFORD CITY  
GAME REVIEWED**

**MICHAEL BROWN  
THOUGHTS**

**THE ROBINS  
PREVIEWED**

**GMB**

**GOING PLACES:  
NORTHAMPTON  
& COVENTRY**

**EXCLUSIVE  
FEATURES**

**KIKO  
POSTER  
INSIDE**

**KMF**



sky BET LEAGUE ONE EFL



**GMB**BIRMINGHAM AND  
WEST MIDLANDS

# White Ribbon Campaign



## DOMESTIC VIOLENCE

GMB Trade Union actively campaigns against Domestic Violence and wants to make people aware that the amounts of incidents increase after football matches.

GMB campaigns to highlight the help that is available not just to the victims but also the help available to the people that commit acts of violence who want to change their pattern of behaviour.

Football doesn't cause Domestic Violence but it can certainly be a factor that can compound it with certain relationships

### STATISTICS

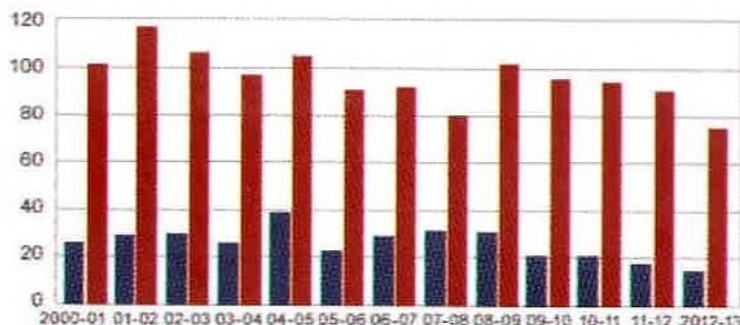
Domestic violence increases 25% during world cup games

On average 2 women a week are killed by a former or current partner that's 104 women a year in the UK alone

People in England & Wales killed by partner or ex-partner

Deaths

■ Male victims ■ Female victims



Source: Home Office

### HELPLINES

If you have been affected by domestic violence in any way the following helplines are there to help.

**Don't delay  
Ring today!**

#### Women's Aid

0808 2000 247

#### Everyman Project

Helpline for men who are violent  
0207 263 8884

#### Doli Project

Forced Marriage  
0845 658 1057

#### Victim Support

Men's Helpline  
0800 328 3623

#### Broken Rainbow

Men and Women in gay, bisexual and transgender relationships.  
0300 999 5248

Join online at [www.gmb.org.uk/join](http://www.gmb.org.uk/join)

Tel: 0121 550 4888

**GMB**

GMB@WORK





## CLUB DIRECTORY

Port Vale Football Club,  
Hamil Road, Burslem,  
Stoke-on-Trent,  
Staffs, ST6 1AW.

Main Switchboard  
01782 655800

Email  
enquiries@port-vale.co.uk

Website:

www.port-vale.co.uk

Ticket Office  
01782 655800 (Option 1)  
ticketoffice@port-vale.co.uk

Commercial  
01782 655800 (Option 4)  
ticketoffice@port-vale.co.uk

Club Shop and Online Shop  
01782 655800 (Option 2)  
clubshop@port-vale.co.uk

## BOARDROOM

Chairman: Norman Smithwaite  
Life President: Tony Bradley

## COMMERCIAL DEPARTMENT

Events Manager  
Sharon Warrander  
01782 655823  
Commercial  
01782 655808

## BEHIND THE TEAM

Club Secretary: Colin Garlick  
Caretaker Manager: Michael Brown  
Assistant Manager: David Kelly  
Head Physio: James Rowland  
Analyst: Dan Thompson  
Academy Manager: Sevvie Aslam  
Head of Recruitment 8-16:  
John Proudmore  
Club Doctor: Peter Grime  
Head Groundsman: Steve Speed  
Senior Staff Administrator:  
Estelle Baggley  
Club Accountant: Tracey Carter  
Ticket Office Manager: Janet Ellis  
Lottery Manager: Brian Lewis  
Merchandise Manager: Andy Burgess  
Senior Safety Advisor: Phil Mayer  
Club Chaplain: John M. Hibberts (M.A.)  
Head of Media: Dave Johnson  
Media Executive: Alex Lowe  
Club Photographer: Bill Bache  
Match Photographer: Gerard Austin

www.port-vale.co.uk

# INSIDE YOUR ROBINS EDITION OF 'THE VALE MAG'



## PORT VALE v SWINDON TOWN

SATURDAY 11TH MARCH 2017  
3.00PM  
EFL SKY BET LEAGUE 1  
VALE PARK

### 04 MICHAEL BROWN

Michael Brown gives his thoughts  
on today's game and our last  
away match.

### 09 THE ROBINS

We look in depth at this  
afternoon's visitors  
Swindon Town.

### 26 KITTED OUT

Dave Johnson looks back  
at the kits worn by Vale and  
Swindon Town over selected years  
and facts about that season.

### 30 TODAY'S THE DAY

Port Vale statistician Phil  
Sherwin looks at events that  
happened on this day.

### 42 NINETY MINUTES

A look back at the  
game against Bradford City

### 60 GOING PLACES

Travel and ticket details for our  
forthcoming trips to Northampton  
Town and Coventry City

### 64 FIXTURES & RESULTS

Up to date results and stats from  
the 2016/17 season so far.



## THE VALE MAG

Publication was brought to you by:  
Editor: Dave Johnson  
Design and published by:  
Mark Tomlinson  
Full Circles | 0115 8409998  
mark@fullcircles.co.uk  
Printed by:  
PDM: Print, Digital, Media Limited  
01246 454525

The opinions expressed are not  
necessarily those of Port Vale  
Football Club. No part of this  
programme may be reproduced,  
stored or transmitted in any  
form by means electronic,  
mechanical, photocopying or  
otherwise, without prior  
permission in writing to  
Port Vale Football Club.











FROM THE DUGOUT

# MICHAEL BROWN

WELCOME BACK TO VALE PARK FOR WHAT IS GOING TO BE A BIG GAME FOR BOTH CLUBS, GIVEN THE SITUATION WE BOTH FIND OURSELVES IN REGARDING WHERE BOTH CLUBS SIT IN THE LEAGUE TABLE.

We have thirteen games remaining and we are well aware of what we need to do between now and the end of the season.

We felt we were very unfortunate not to come out with a win at Roots Hall last weekend, especially after taking the lead at a relatively late stage in the game.

We could have easily gone into that fixture feeling sorry for ourselves after losing at home to Bradford, and then going into the game against Southend we picked up a further two injuries to seemingly keep that run of bad luck going.

We were unable to select either Seb Amoros and Kiko and then during the game we lost both Jerome Thomas and Danny Pugh to injury.

Despite everything, we put in a gritty performance and anybody who was there will have had the same view as

I did, we were easily worth the point, and arguably deserved all three.

We asked two young players to play their part during the game, Dan Turner coming off the bench and Billy Reeves making his debut for the club, and neither of them let us down.

That shows the strength of character within the dressing room and it is what makes us all feel we have enough in this squad to turn things around.

Everybody at the club has that belief and desire and with the supporters behind us, we feel we have every chance of succeeding.

Our fans have been fantastic all season and despite the results going against us at times, they have got right behind us, and that is something that can play a big part between now and the end of the season.

Although we all realize we face a difficult task in the coming weeks, we also know that it is not an unsurmountable hurdle that we face. As for today, we are looking forward to the game.

Finally, I would like to welcome Luke Williams and his staff, players and supporters to Vale Park for today's game.

Enjoy the game  
**MICHAEL BROWN**



# WHENEVER. WHEREVER.

Just try to keep calm...



Listen to every game live on PlayerHD from £4.49 a month.

Visit [efl.com/playerhd](http://efl.com/playerhd)



Player 



Anthony Wordsworth's 83rd minute goal rescued a point for play-off chasers **SOUTHEND UNITED** to deny **PORT VALE** their first victory of 2017. Chris Eagles' header put Vale ahead 12 minutes from time, only for Wordsworth to level soon after from Ben Coker's cross.

Tom Elliott struck for the 13th time as **AFC WIMBLEDON** held **BOLTON WANDERERS** at the Macron Stadium. The Trotters had seemingly been on their way to three points through Gary Madine's ninth of the campaign, but Elliott met George Francomb's cross to grab a useful point for the Dons.

Alex Jones netted the only goal to help **BRADFORD CITY** edge past **PETERBOROUGH UNITED**. The forward, who joined from Birmingham in January, bundled the ball over the line, after Mark Marshall's initial effort had been saved. Tom Nichols squandered the visitors' best chance, when his effort was blocked on the line.

Bradley Dack and Cody McDonald were on target as **GILLINGHAM** won at in-form **BURY** to move six points clear of the bottom-four. James Vaughan's overhead kick reduced the deficit in the second-half, with the hosts also missing opportunities to equalise, but the Gills held on for a crucial victory.

**MILLWALL** tightened their grip on sixth place thanks to Lee Gregory's last-gasp winner against

# LEAGUE ONE ROUNDUP



**ADAM MILLWARD** LOOKS BACK ON RECENT EFL SKY BET LEAGUE ONE RESULTS

**MK DONS.** The striker opened the scoring during the first-half, only for Ben Reeves to level on the half-hour mark. Dean Bowditch almost won it for the Dons, before Gregory picked himself up to net the winner from the spot.

John-Joe O'Toole grabbed the winner as **NORTHAMPTON** secured a valuable win over **CHARLTON ATHLETIC**. Jordan Botaka's scrappy finish brought the Addicks level, after Michael Smith had put the hosts in front, with O'Toole's seventh in as many games lifting the Cobblers seven points clear of the drop-zone.

**BRISTOL ROVERS** boosted their play-off hopes with a comfortable victory over an injury-hit **OXFORD** side. Ollie Clarke and Stuart Sinclair both scored in the first-half to lift Rovers to within seven points of the top-six, while the defeat sees United drop to tenth.

League leaders **SHEFFIELD UNITED** led twice but were held by a plucky **ROCHDALE** outfit. Early goals from Mark Duffy and Daniel Lafferty had put the Blades 2-0 up, before Steven Davies reduced the arrears and Matt Lund levelled after the break. Billy Sharp's volley restored United's advantage, only for Nathaniel Mendez-Laing to earn 'Dale a point.

**FLEETWOOD** moved up to second place in League One with victory at promotion-rivals **SCUNTHORPE**, stretching their unbeaten run to 18 matches. Devante Cole fired the Cod Army ahead before the interval, with Bobby Grant netting a late second against his former club, who are now seven games without a win.

**CHESTERFIELD** remain hopeful of beating the drop after a last-gasp winner at fellow-strugglers **SWINDON TOWN**. Substitute Reece Mitchell found the net from Ched Evan's cross to give the Spireites a first win in eight games.

**WALSALL** saw off **OLDHAM** in what was a bad-tempered affair at the Bank's Stadium. Latics' midfielder Lee Croft was sent-off for a reckless challenge inside 16 minutes, but his side matched the hosts until Simeon Jackson was upended in the area, with Erhun Oztuner dispatching the resulting penalty. Brian Wilson also received his marching orders to leave the visitors with nine-men, before Amadou Bakayoko's stunning strike made it 2-0.

sky BET LEAGUE ONE EFL

## TODAY'S FIXTURES

|                |   |                 |
|----------------|---|-----------------|
| Wimbledon      | ✓ | Northampton     |
| Bristol Rovers | ✓ | Southend United |
| Charlton       | ✓ | Walsall         |
| Chesterfield   | ✓ | Shrewsbury      |
| Coventry City  | ✓ | Bradford City   |
| Fleetwood      | ✓ | Bolton          |
| Gillingham     | ✓ | Scunthorpe      |
| Mk Dons        | ✓ | Rochdale        |
| Oldham Amblers | ✓ | Bury            |
| Peterborough   | ✓ | Oxford          |
| Port Vale      | ✓ | Swindon Town    |
| Sheffield Utd  | ✓ | Bolton          |

www.port-vale.co.uk

sky BET LEAGUE ONE EFL

## LAST WEEKENDS RESULTS

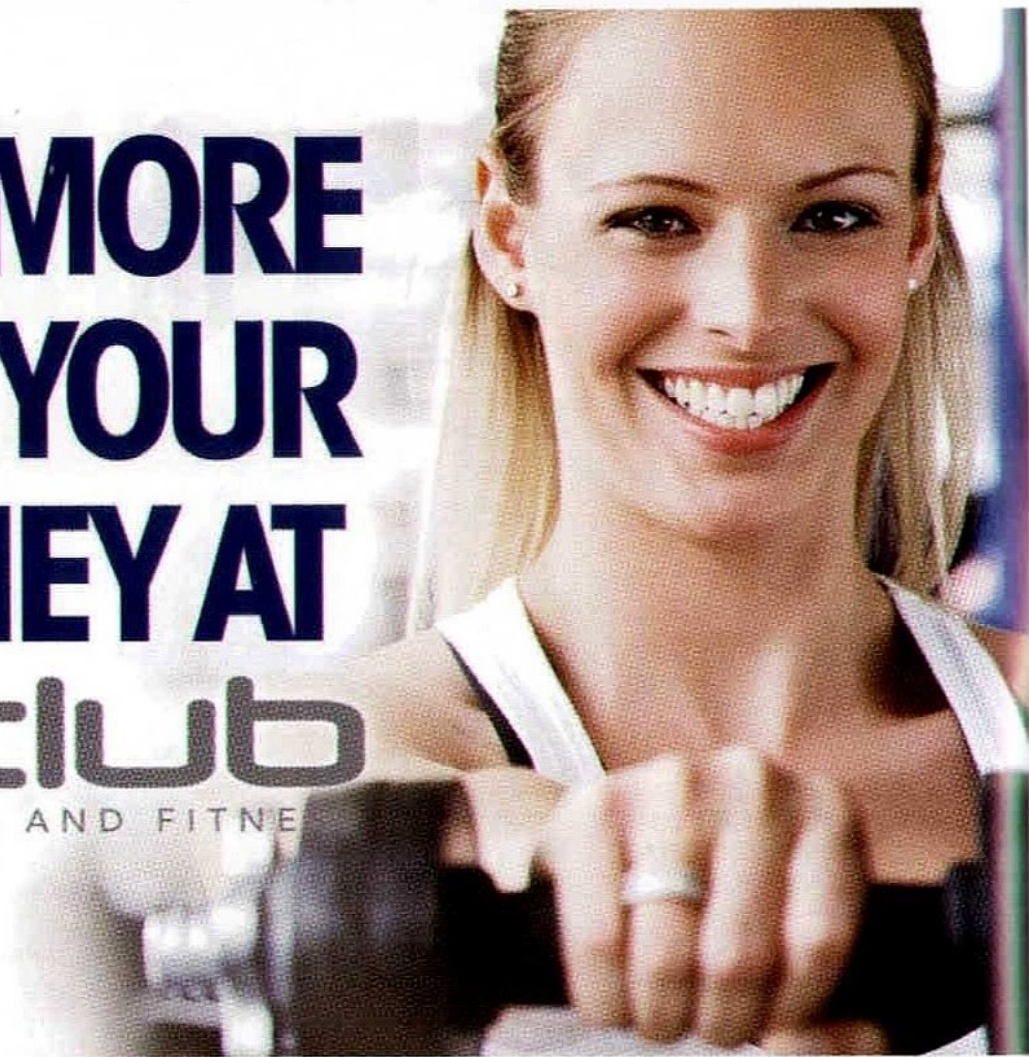
|             |     |                |
|-------------|-----|----------------|
| Bolton      | 1-1 | Wimbledon      |
| Bradford    | 1-0 | Peterborough   |
| Bury        | 1-2 | Gillingham     |
| Millwall    | 2-1 | Mk Dons        |
| Northampton | 2-1 | Charlton       |
| Oxford      | 0-2 | Bristol Rovers |
| Rochdale    | 3-3 | Sheffield Utd  |
| Scunthorpe  | 0-2 | Fleetwood      |
| Shrewsbury  | 0-0 | Coventry City  |
| Southend    | 1-1 | Port Vale      |
| Swindon     | 0-1 | Chesterfield   |
| Walsall     | 2-0 | Oldham         |

VALE MAG | 07



# GET MORE FOR YOUR MONEY AT

**mclub**  
SPA AND FITNESS



**mclub**  
SPA AND FITNESS

Official Fitness Club Partner

**Tel: 01782 210210**

[info@mclubspaandfitness.co.uk](mailto:info@mclubspaandfitness.co.uk)

Festival Heights Retail Park  
Stoke-on-Trent, ST1 5NZ

[www.mclubspaandfitness.co.uk](http://www.mclubspaandfitness.co.uk)

**mclub**  
SPA AND FITNESS

Official Fitness Club Partner

**Tel: 01782 667900**

[info@mclubspaandfitness.co.uk](mailto:info@mclubspaandfitness.co.uk)

Parklands, Newcastle Road,  
Stoke-on-Trent, ST4 6NW

[www.mclubspaandfitness.co.uk](http://www.mclubspaandfitness.co.uk)

**BodyFit** Express

**Tel: 01782 210217**

[info@bodyfitexpress.co.uk](mailto:info@bodyfitexpress.co.uk)

Festival Heights Retail Park,  
Stoke-on-Trent, ST1 5NZ

[www.bodyfitexpress.co.uk](http://www.bodyfitexpress.co.uk)





# ONE TO WATCH

## LAWRENCE VIGOUROUX

SWINDON KEEPER SUMMED UP HIS TEAM'S FRUSTRATION AFTER THEY WERE BEATEN 1-0 AT HOME TO RELEGATION RIVALS CHESTERFIELD ON SATURDAY.

The keeper said his team could have had the game in the bag long before the Spireites won it through Reece Mitchell in the last minute of injury time.

The run kept Swindon fourth bottom, stalling their revival following wins over Coventry and Gillingham. But Vigouroux said his team played well in every respect except sticking the ball in the net.

He said: "We had loads of chances, you see the stats and we had 20 shots. I don't think we tested the goalkeeper enough but we had way more possession and they were camped in their own half for long periods of the game and were just playing on the counter.

"When you play teams like that, you have got to put your chances away and then they will start to come at us, the game will open up and we will get more chances.

"With the way we play, most teams haven't got that same sort of style, so they know we are going to have a lot of the ball and they sit back and we dictate the game, and they just try to pounce on individual errors.

"On Saturday, I think we defended very well. They didn't really have anything on the counter, they just had one opportunity and took it."

The 23-year-old Chilean goalkeeper joined Swindon from Liverpool last summer for an undisclosed fee having impressed on loan at the County Ground. He began his career at Tottenham before moving to Anfield in 2014.



MICHAEL BAGGALEY

### FACT FILE: LAWRENCE VIGOUROUX

**DATE OF BIRTH:**

19 November 1993

**PLACE OF BIRTH:**

Camden, England

**POSITION:**

Goalkeeper

**YOUTH CAREER:**

Brentford

**SENIOR CAREER:**

2012-14 Tottenham Hotspur

2013-14 Hyde United (L)

2014-15 Liverpool

2015-16 Swindon Town (L)

2016 Swindon Town

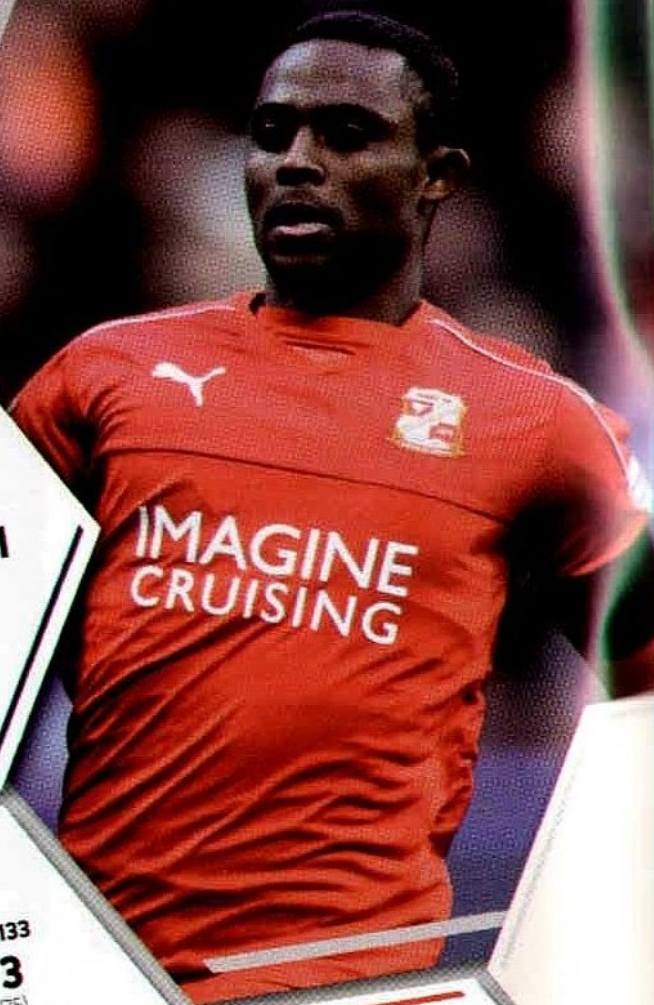
**INTERNATIONAL CAREER:**

2013 Chile U20



# FORM GUIDE

**DAVE JOHNSON**  
LOOKS AT SWINDON  
TOWN'S PREVIOUS  
SIX FIXTURES



Saturday 4th  
March 2017:  
@ The County Ground  
EFL League One | Att: 6,691  
**SWINDON 0**

**CHESTERFIELD 1**  
Mitchell (90+3)

POSSESSION:



Tuesday 28th  
February 2017:  
@ County Ground  
EFL League One | Att: 6,133  
**SWINDON 3**  
Ince (56), Obika (61), Branco (75)

**GILLINGHAM 1**  
McDonald (10)

POSSESSION:



Saturday 25th  
February 2017  
@ Ricoh Arena  
EFL League One | Att: 9,543  
**COVENTRY CITY 1**  
G Thomas (90+1)

**SWINDON 3**  
Ajose (32, 71), Obika (38)

POSSESSION:



Tuesday 14th  
February 2017:  
@ Sixfields Stadium  
EFL League One | Att: 5,094  
**NORTHAMPTON 2**  
Jones (64 o.g.), O'Toole (82)

**SWINDON 1**  
Norris (81)

POSSESSION:



Saturday 18th  
February 2017:  
@ County Ground  
EFL League One | Att: 6,773  
**SWINDON 0**

**OLDHAM 0**

POSSESSION:



Saturday 11th  
February 2017:  
@ Gigg Lane  
EFL League One | Att: 2,713  
**BURY 1**  
Vaughan (37 pen)

**SWINDON 0**

POSSESSION:





20TH AUGUST 2016

## SWINDON PORT VALE

1  
0

At County Ground  
League One  
Attendance 6,182

**SWINDON SCORER:**  
Barry (47)

### SWINDON TOWN:

Lawrence Vigouroux, Brad Barry, Lloyd Jones, Jamie Sendles-White, James Brophy, Nathan Thompson, Michael Doughty, Yaser Kasim, Anton Rodgers, Nathan Delfouneso, Luke Norris.

**SUBS:** Will Henry, Darnell Furlong, John Goddard, Ellis Iandolo, Conor Thomas, Jordan Stewart, Jermaine Hylton

### PORT VALE:

Jak Alnwick, Kjell Knops, Ben Purkiss, Nathan Smith, Rennie Streeke, Anthony de Freitas, Sam Foley, Anthony Grant, Paulo Tavares, Anton Forrester, JJ Hooper. **SUBS:** Ryan Boot, Calvin Mac-Intosh, Sebastian Amores, Chris Mbariaba, Quentin Pereira, Regino Gollia, Alex Jones



# PREVIOUS MEETINGS

DAVE JOHNSON LOOKS AT PAST MEETINGS  
BETWEEN PORT VALE & SWINDON TOWN

## PAST LEAGUE MEETINGS BETWEEN THE TWO SIDES

2ND FEBRUARY 2016

## PORT VALE SWINDON

1  
0

At Vale Park  
League One  
Attendance 3,256

**VALE SCORER:**  
Dickinson (6)

### PORT VALE:

Jak Alnwick, Ryan Inniss, Ben Purkiss, Carl Dickinson, Richard Duffy, Sam Foley, Anthony Grant, Louis Dodds, Matt Kennedy, AJ Leitch-Smith, Theo Robinson. **SUBS:** Ryan Boot, Rennie Streeke, Adam Yates, Sam Kelly, Michael Brown, Byron Moore, JJ Hooper

### SWINDON TOWN:

Lawrence Vigouroux, Brad Barry, Brandon Ormonde-Ottewill, Jermaine Hylton, Nathan Thompson, Michael Doughty, Yaser Kasim, Anton Rodgers, Jermaine Hylton, Jon Obika, Fabien Robert. **SUBS:** Tyrell Belford, James Brophy, Ellis Iandolo, Lee Marshall, Jordan Young, Josh Cole

18TH AUGUST 2015

## SWINDON PORT VALE

2  
2

At County Ground  
League One  
Attendance 7,026

**SWINDON SCORERS:**  
Robert (12), Rodgers (66)

**VALE SCORERS:**  
Ikpeazu (21), Foley (90 pen)

### SWINDON TOWN:

Lawrence Vigouroux, Raphael Branco, Nathan Byrne, Brandon Ormonde-Ottewill, Jordan Turnbull, Jordan Williams, Nathan Thompson, Yaser Kasim, Anton Rodgers, Fabien Robert, Michael Smith. **SUBS:** Tyrell Belford, Brad Barry, Kevin Stewart, James Brophy, Lee Marshall, Dnssa Traore, Miles Storey

### PORT VALE:

Jak Alnwick, Ryan Inniss, Ben Purkiss, Carl Dickinson, Richard Duffy, Sam Kelly, Sam Foley, Anthony Grant, Louis Dodds, Byron Moore, Uche Ikpeazu. **SUBS:** Sam Johnson, Rennie Streeke, Chris Birchall, Colin Daniel, Chris Birchall, Michael Brown, Ryan Lloyd, AJ Leitch-Smith

14TH MARCH 2015

## PORT VALE SWINDON

0  
1

At Vale Park  
League One  
Attendance 5,120

**SWINDON SCORER:**  
Branco (8)

### PORT VALE:

Chris Neal, Ryan McGivern, Freddie Vesell, Chris Robertson, Carl Dickinson, Michael Brown, Mark Marshall, Michael O'Connor, Byron Moore, Tom Pope, Ben Williamson. **SUBS:** Sam Johnson, Adam Yates, Colin Daniel, Richard Duffy, Chris Birchall, Ryan Lloyd, Louis Dodds

### SWINDON TOWN:

Wes Foderingham, Raphael Branco, Nathan Byrne, Jack Stephens, Harry Toffolo, Jordan Turnbull, John Swift, Nathan Thompson, Ben Gladwin, Massimo Luongo, Andy Williams. **SUBS:** Connor Johns, Jack Barham, Yaser Kasim, Anton Rodgers, Jermaine Hylton, Jon Obika, Michael Smith

28TH DECEMBER 2014

## SWINDON 1 PORT VALE 0

At County Ground  
League One  
Attendance 9,248

**SWINDON SCORER:**  
Williams (56)

### SWINDON TOWN:

Wes Foderingham, Raphael Branco, Nathan Byrne, Jack Stephens, Harry Toffolo, Jordan Turnbull, Ben Gladwin, Massimo Luongo, Louis Thompson, Jon Obika, Andy Williams. **SUBS:** Tyrell Belford, Jack Barham, Armani Bell, Jake Reeves, Anton Rodgers, George Barker, Michael Smith

### PORT VALE:

Chris Neal, Freddie Vesell, Adam Yates, Carl Dickinson, Richard Duffy, Michael Brown, Mark Marshall, Michael O'Connor, Louis Dodds, Dany N'Guessan, Ben Williamson. **SUBS:** Sam Johnson, Chris Robertson, Colin Daniel, Chris Birchall, Chris Lines, Byron Moore, Achille Campion



**signal1**   
more of the music you love

**BREAKFAST  
WITH ANDY & LOUISE  
WEEKDAYS FROM 6AM**



[www.signal1.co.uk](http://www.signal1.co.uk)



#1

GOAL KEEPER

**LAWRENCE  
VIGOUROUX****DOB:** 19 November 1993**LAST CLUB:** Liverpool

The goalkeeper put pen to paper on a permanent deal at Swindon Town in the summer of 2016 after enjoying a loan stint in Wiltshire during 2015/16. Vigouroux was snapped up by Tottenham in 2012 before joining Liverpool in the summer of 2014.

The former Chilean youth international was a regular for the Under-21 side at Anfield before his move to The County Ground.



#2

DEFENDER

**NATHAN  
THOMPSON****DOB:** 9 November 1990**LAST CLUB:** Swindon Town Youth

A product of the Swindon Town Academy, Thompson made his breakthrough into the first team during 2012/13 campaign. The tough-tackling defender was a regular as Swindon made the League One Play-Offs that term. One of the first names on the team sheet and a firm fans' favourite ever since,

the two-time Player of the Year winner is the current skipper at the County Ground.



#19

FORWARD

**NICKY  
AJOSE****DOB:** 7 October 1991**LAST CLUB:**

On loan from Charlton Athletic

The former Manchester United trainee spent three years at Peterborough United and has picked up experience when out on loan with several clubs, including a previous loan deal with Swindon at the beginning of the 2013-14 season before he signed a permanent deal in 2015.

He also enjoyed a spell with Crewe Alex, for whom he hit 8 goals in 27 games.

In January he signed for Charlton, but remains on loan with Swindon.

**THE  
SPINE**

WE LOOK AT THE  
BACKBONE OF THE  
SWINDON TOWN  
SQUAD

#23

MIDFIELDER

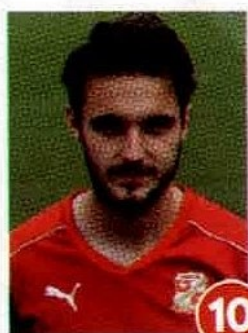
**ROHAN  
INCE****DOB:** 8 November 1992**LAST CLUB:** On loan from Brighton & Hove Albion

Midfielder joined the Robins on loan from Brighton & Hove Albion in January and has made a big impression at the County Ground as Swindon try to steer clear of the drop zone. Playing in a deep-lying role in front of the back four, the former Chelsea trainee soon made his mark, becoming a fans' favourite and the youngster is expected to have a big future ahead of him.



WE LOOK AT THE REST  
OF THE SWINDON TOWN SQUAD

# THE ROBINS



### 3. BRANDON ORMONDE-OTTEWILL

Left wing-back Who joined Swindon from Arsenal in 2015 having spent his scholarship with the Gunners. A regular fixture on the left side of the Town formation over the course of 2015/16, 'BOO' will be hoping to continue his progress in senior football this season.

### 4. CONOR THOMAS

Formerly with Coventry City, the midfielder came through the ranks at his hometown club and would go on to spend 15 years with the Sky Blues. Racked up over 100 appearances for the Midlands outfit and even spent time on loan with Liverpool in 2011. Following his release at the end of the 2015/16 campaign, he signed a three-year deal with the Robins after a successful trial period.

### 5. ANTON RODGERS

The midfielder joined the Town in the summer of 2014 after leaving Oldham Athletic. Having started his career at Chelsea, Rodgers broke into the professional game with Brighton and Hove Albion. A regular fixture last term, he has now racked up over 50 appearances for the Town.

### 6. JAMIE SENDLES-WHITE

Sendles-White joined Swindon in February 2016. Formerly a trainee at Queens Park Rangers, the defender spent time at Colchester United and Mansfield Town on loan from Loftus Road. He was most recently with Hamilton Academical in Scotland at the start of the 2015/16 campaign before agreeing a termination of his contract north of the border. The defender has represented Northern Ireland at Under-19 and 21 level.

### 8. YASER KASIM

Kasim penned a permanent deal with the Town ahead of the 2013/14 campaign. In his time at the Arnex Stadium, the classy holding midfielder spent time on loan at Luton Town and Macclesfield Town. A regular fixture in the starting XI at Swindon, Yaser has also represented Iraq at international level and played for his country at the 2015 Asian Cup in Australia.

### 9. JONATHAN OBIKA

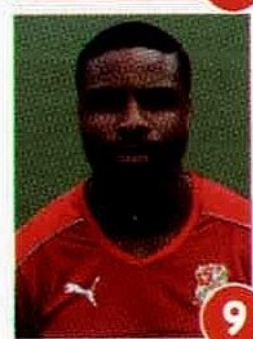
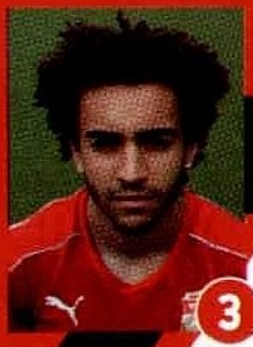
After a brief spell on loan at The CG in 2011, Obika is now back in Wiltshire on a permanent deal having joined on deadline day 2014 from Tottenham Hotspur. The frontman netted twice on his debut at Bradford and went on to score in his first four games, equaling a record set by Swindon's all-time record goalscorer, Harry Morris, in 1926.

### 10. JOHN GODDARD

A highly-rated talent in non-league football, Goddard was plucked from National League side, Woking in the summer of 2016, joining for an undisclosed fee. Once on the books at Reading as a youngster, the goal-scoring midfielder netted 20 times for the Cards last term and will be hoping to make his mark at the County Ground during the 2016/17 campaign.

### 11. JAMES BROPHY

The defender signed a one-year deal with Swindon following a successful trial period in 2015 before agreeing an extension at the conclusion of the 2015/16 campaign. The left-sided defender - who can also operate as a wing-back and in a more advanced position - joined the Town from non-league football where he was plying his trade with Edgware Town.





## SWINDON TOWN

**12. WILL HENRY**

Formerly with Bristol City as a youngster, the goalkeeper spent a scholarship year with Swindon Town in 2015/16 before being drafted into the first team after injuries to three senior stoppers at the end of last term. He saved a penalty on his debut at Rochdale.

**14. ELLIS IANDOLO**

The young attack-minded midfielder put pen to paper on a professional deal with Town in August 2015 after a short trial period. Released by Gillingham as a youngster, Ellis then joined the Soccer Elite FA Academy before moving to Wiltshire last summer. One for Town fans to watch out for in the future after making a dozen appearances in red and white last term.

**15. TOM SMITH**

Another highly-rated youngster who signed his first professional contract in the summer after coming through the academy system. Made his Town debut in 2015 at Preston North End before making a further two substitute appearances last term. Scored his first senior goal at Crewe Alexandra, rifling home a thunderbolt from the edge of the 18-yard box.

**16. JORDAN STEWART**

The tricky forward signed for the Town from Northern Ireland Premiership side, Glentoran. Stewart has represented Northern Ireland at Under-19 level and has been part of the Under-21 squad. Made his debut at Millwall in October 2015 and spent a portion of last term on loan at Grimsby Town. Netted his first Swindon goal in the EFL Cup tie at QPR in August.

**18. JAKE EVANS**

Evans put pen to paper on his first senior contract in April 2016 at the conclusion of his scholarship at The County Ground. The versatile youngster has been with Swindon Town since the age of ten and made his debut in red and white on the final day of the 2015/16 campaign against Shrewsbury Town.

**24. JERMAINE HYLTON**

The pacey striker penned a two-and-a-half year contract with Swindon in the January 2015 transfer window, joining from non-league side, Redditch United. Formerly with Birmingham City and Kidderminster Harriers before breaking into the Redditch side, Hylton made his Town bow as a substitute in the televised win at Coventry City and netted his first goal against Peterborough United.

**27. BRADLEY BARRY**

The former Brighton defender – the nephew of Everton and England midfielder, Gareth – put pen to paper on a deal with the Robins in August 2015 following a successful trial period. An impressive breakthrough season in senior football saw the youngster make the right-back/right wing-back position his own with a string of solid performances.

**28. LLOYD JONES**

The defender joined Town a season-long loan from Liverpool in August 2016. Plymouth-born Jones moved to Anfield from his hometown club in 2011 and has been a regular in the Liverpool academy sides ever since. He has also spent time out on loan with Cheltenham Town, Accrington Stanley and Blackpool and has been

capped by Wales at Under-17 and Under-18 level.

**29. RAPHAEL ROSSI BRANCO**

Brazilian centre-half who penned a deal with Town in the summer of 2013 after a successful trial period. He stepped off the bench to make his league debut in a 1-1 draw at Bradford City later that season. A regular fixture in Town's defensive unit over the past two years and was part of the squad that were beaten in the 2015 League One Play-Off Final.

**33. LUKE NORRIS**

Norris arrived at the County Ground on a three-year deal from Gillingham at the start of the 2016/17 campaign. The striker started his career in non-league football with Hitchin Town before being snapped up by Brentford. In the summer of 2014, he departed the Bees to sign for Gillingham and netted eight times for the Kent club in 2015/16.

**35. JORDAN YOUNG**

A graduate of the STFC Academy, the teenager joined Swindon in the summer of 2016 while still a second year scholar. A highly-rated talent, he made his Town debut against Port Vale in February 2016 aged 16 and 185 days – the fourth-youngest player to make their Swindon bow. On the final day of the 2015/16 season his goal against Shrewsbury Town made him the third-youngest Town goalscorer.

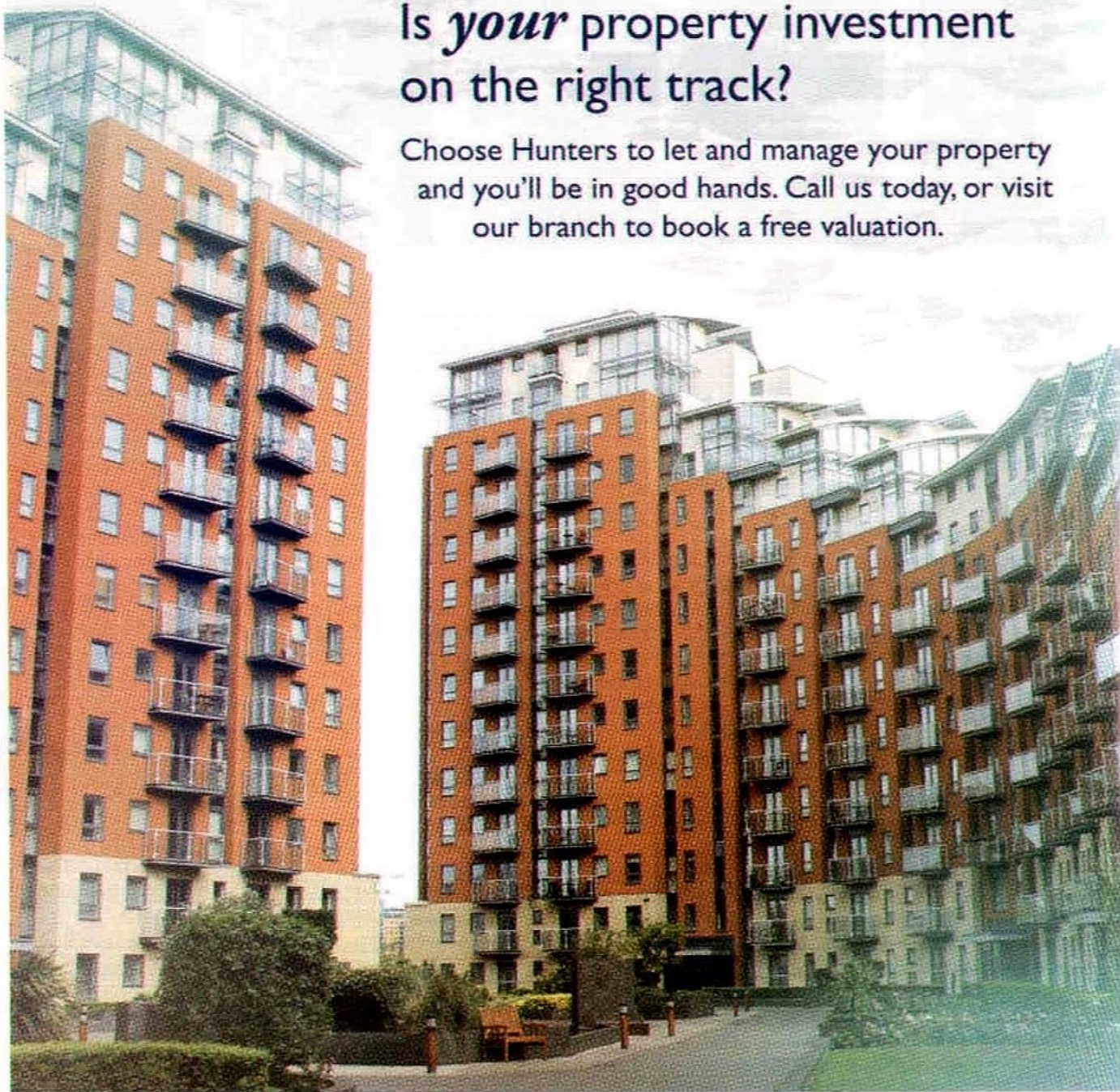




As seen  
on TV!

## Is *your* property investment on the right track?

Choose Hunters to let and manage your property  
and you'll be in good hands. Call us today, or visit  
our branch to book a free valuation.



STOKE@HUNTERS.COM / 01782 626522  
SALES / LETTINGS / MANAGEMENT / HUNTERS.COM

**HUNTERS®**  
HERE TO GET *you* THERE

\* If you are under contract with another agent you may still be liable also to pay their fee.



# Wrights

■ Call us now to find out what  
Wrights can do for you

■ Let us prove how our commitment to quality, value and long-term  
customer relationships can make a positive difference to your  
business success.

## Wrights

01270 504 300 | [www.wrightsfoodgroup.com](http://www.wrightsfoodgroup.com)





# COMMERCIAL NEWS

GOOD AFTERNOON TO EVERYONE AT VALE PARK FOR TODAY'S SKY BET LEAGUE ONE CLASH AGAINST SWINDON TOWN.

Today we welcome Sovereign as our match sponsors. Sovereign specialise in Air Conditioning, Heating, Ventilation and Plumbing & Sanitary installations.

We also welcome Match Ball Sponsors OneValeFan, who have supported the club for many years, both as supporters and as sponsors.

The club are pleased to announce a new initiative called 'The Valiant Members Club'. Fans who join have the chance to win Port Vale related prizes, such as Match ball Sponsorship, an Executive Box for a game, Training and lunch with the players, and lots of 'money can't buy prizes'. There will be a prize announced each month.

All members will also be also be invited once a season to watch a

game in style, from the hospitality area for free, and a members certificate will be issued to every member.

We intend to launch the scheme on 1st June 2017, providing of course the interest is there to make it viable. Application forms, with all the information attached, can be found around the ground, in the Ticket Office and in the Club Shop. All profits will go to the Port Vale Development Society.

For further information, please contact Brian Lewis.

Email: [brian.lewis@port-vale.co.uk](mailto:brian.lewis@port-vale.co.uk) Tel: 07791674961

Sovereign

For A Free No Obligation  
Design & Quotation Call  
**01782 510600**

Air Conditioning | Mechanical & Electrical | Facilities Management
Heating • Ventilation • Plumbing & Sanitary Installations

24hr Call Out / 7 Days A Week / Seven Year Warranties / Nationwide Coverage
\* STAFFORDSHIRE'S LEADING AIR  
CONDITIONING SPECIALIST FOR  
OVER 30 YEARS \*

Unit 3D, Forge Way, Brown Lane Ind. Est, Stoke - on - Trent ST8 7DN
[www.sovpsl.com](http://www.sovpsl.com)

## WATCH THE VALE IN STYLE!

Why not upgrade your season ticket and dine in our Chris Bayley Lounge or Valiant Suite. For an upgrade price of £45 you can enjoy a 3 course meal before kick off and watch the game from a padded President seat. It's a fantastic way to celebrate a birthday. For further information on match-days and events contact Joe Longhurst on [commercial@port-vale.co.uk](mailto:commercial@port-vale.co.uk) or Call **01782 655808**



### TODAY'S SPONSORS

MATCH

**Sovereign**

MATCH BALL

**onevalefan**

HAPPY BIRTHDAY

VALIANT KIDS' BIRTHDAY BOX!

An exciting opportunity to hire an executive box for your Junior Valiants birthday! The deal includes children's food, a signed ball, photo with the man of the match and much more!

For more information contact us on [commercial@port-vale.co.uk](mailto:commercial@port-vale.co.uk) or Call **01782 655808**







# COMMERCIAL GALLERY



**PORT VALE  
v BRISTOL ROVERS**

SATURDAY 18TH FEBRUARY 2017  
EFL SKY BET LEAGUE ONE



## EXECUTIVE BOX DEAL

It's a great way to  
celebrate a big day...  
for only £644 you can  
hire an Executive box +  
pie, chips and peas.  
Please contact:

**01782 655808**



## PLAYER SPONSORSHIPS STILL AVAILABLE

We have sponsorship available for first team players. Receive a signed match worn shirt from your favourite player at the end of the season and your name under them in the match day programme. We will also arrange a photo of you and your sponsored player to go on our website! If you are interested please get in touch. Email [commercial@port-vale.co.uk](mailto:commercial@port-vale.co.uk) or call **01782 655808**.

## NEXT UP AT VALE PARK



**PORT VALE  
v SHREWSBURY TOWN**  
FRIDAY 17TH MARCH 2017

If you are interested in hospitality  
for this fixture please get in touch

**01782 655808**

sky BET LEAGUE ONE | EFL





## NEW SCHEME SEES OVER 200 FEMALES PLAYING FOOTBALL

Port Vale Foundation Trust is celebrating the success of an innovative new scheme that has seen over 200 more women and girls playing football. The Foundation's Female Football programme funded by the Premier League Charitable Fund, EFL Trust and Sport Across Staffordshire is delivered by female coaches and focuses on fun and fitness rather than competition and performance. The funding has allowed them to deliver sessions within schools and out in the community and it has brought the benefits of sport to women and girls who previously might not have considered playing football. Since January 2017, the Foundation Trust have engaged with 106 girls taking part in after school clubs with 22 transitioning into the community sessions. There is now demand to run girls only coaching days during the half term holidays and there will be more girls only days in next holiday schemes for



ages 5-13. The Foundation will look to create new affiliated teams in September 2017 as well as a Ladies Football Academy in partnership with Stoke on Trent College. Within their community sessions- Soccerise, Saturday Morning Girls Football and Keep Fit with Football they have engaged with 114 women and girls of all ages, fitness and footballing abilities. This is a total of 220 new females playing football since January 2017.

"Getting women and girls active is really important to us and it is great to see so many taking up the opportunity to play football thanks to this programme. We have engaged with people who have never had any interest in football before and mums and daughters are also taking part together which is great to see. We are really pleased with how our scheme is progressing"

Sarah Minshall PVFC  
Foundation Inclusion Officer

For more information on the Foundations girls and women's programme please contact Sarah on **01782 757066** or email [foundation.trust@port-vale.co.uk](mailto:foundation.trust@port-vale.co.uk)

PORT VALE FOUNDATION IS A REGISTERED CHARITY ALIGNED TO PORT VALE FOOTBALL CLUB. TEAMING UP WITH LOCAL SCHOOLS, POTENTIAL SPONSORS AND BUSINESSES, HARNESSING THE PASSION OF THE CLUB AND ITS FANS WE AIM TO INSPIRE, SUPPORT AND DELIVER POSITIVE CHANGE AND EQUALITY OF OPPORTUNITY FOR YOUNG PEOPLE AND VULNERABLE ADULTS ACROSS THE STAKE-ON-TRENT AND SURROUNDING AREAS

WE TARGET SUCCESS IN FOUR KEY AREAS:

- SCHOOL SPORTS PARTICIPATION
- HEALTH AND DISABILITY
- EDUCATION
- SOCIAL INCLUSION

For more information on the Foundation please contact **01782 757066** or email [foundation.trust@port-vale.co.uk](mailto:foundation.trust@port-vale.co.uk)



FOR MORE INFORMATION ON THE FOUNDATIONS SUMMER PROGRAMME PLEASE CONTACT THE FOUNDATION ON **01782 757 066** OR EMAIL [FOUNDATION.TRUST@PORT-VALE.CO.UK](mailto:FOUNDATION.TRUST@PORT-VALE.CO.UK)



# JUNIOR VALIANTS

## JUNIOR SUPPORTERS' PAGE

### BOOM BOOM

1. WHICH TREES ARE ALWAYS SAD?  
PINE TREES!
2. WHICH FLOWERS GROWN UNDER YOUR NOSE?  
TULIPS!
3. WHERE ARE THE ANDIES?  
ON THE END OF YOUR ARMIES!
4. WHAT DO HIPPIES DO?  
HOLD YOUR LEGGIES ON!
5. WHAT DANCES DO HIPPIES HATE?  
SQUARE DANCES!

### BOOMER'S PUZZLE

THE NICK NAMES OF THESE TEAMS ARE ALL ANIMALS.  
CAN YOU MATCH THE TEAM TO THE CORRECT NICK NAME?

- |               |                 |
|---------------|-----------------|
| 1 TERRIERS    | A HULL          |
| 2 FOXES       | B SHREWSBURY    |
| 3 WOLVES      | C HUDDERSFIELD  |
| 4 STAGS       | D SUNDERLAND    |
| 5 RAMS        | E MILLWALL      |
| 6 BLACK CATS  | F DERBY         |
| 7 TIGERS      | G WREXHAM       |
| 8 LIONS       | H LEICESTER     |
| 9 RED DRAGONS | I MANSFIELD     |
| 10 SHREWS     | J WOLVERHAMPTON |

Port Vale FC Foundation would like to welcome Royal Stoke University hospital children. to this afternoon's home game. They have been selected for the 'Ultimate Match Day Experience'. This experience consists of an access all areas stadium tour, coaching sessions, meet the mascot, pitch side photos and much, much more! These lucky Valiant's will also be today's official flag bearers.

For more information on the Junior Valiant's or the 'Ultimate Match Day Experience' package please contact the Foundation on 01782 757066 or email [foundation.trust@port-vale.co.uk](mailto:foundation.trust@port-vale.co.uk)



CAN YOU FIND BOOMER? HE IS HIDING INSIDE THE PROGRAMME IN THREE DIFFERENT PLACES. SEE IF YOU CAN SPOT WHERE HE IS HIDING.

### BIRTHDAY WISHES

THE FOLLOWING MEMBERS OF THE JUNIOR VALIANTS CELEBRATE THEIR BIRTHDAYS AS FOLLOWS:

**WILLIAM BANKS**  
- 10TH MARCH

**EMILY WAIN**  
- 14TH MARCH

MANY HAPPY RETURNS TO EACH ONE OF YOU FROM EVERYBODY AT PORT VALE FC

FOR MORE INFORMATION ON THE JUNIOR VALIANTS MEMBERSHIP PLEASE CONTACT THE PORT VALE FOUNDATION ON 01782 757066 OR EMAIL [foundation.trust@port-vale.co.uk](mailto:foundation.trust@port-vale.co.uk)

#### PORT VALE FOUNDATION PARTNERS:

**MATCH!**



Stoke on Trent College





# PLATINUM COLLECTION

## SWINDON TOWN

FOOTBALL HISTORIAN LEIGH EDWARDS HIGHLIGHTS LEADING  
SWINDON TOWN FIGURES AND ACHIEVEMENTS FROM 70  
POST-WAR LEAGUE SEASONS



### FAB FOUR

#### MIKE SUMMERBEE

Brilliant winger Mike Summerbee was capped eight times by England after leaving Swindon Town. Initially with Cheltenham Town, he moved to the County Ground in March 1960 and was an important figure in Swindon's 1962-63 promotion success. He netted 39 goals in 218 League games prior to joining Manchester City in August 1965, amassing a vast collection of domestic and European honours under the Joe Mercer/Malcolm Allison partnership at Maine Road. Later playing for Burnley, Blackpool and Stockport County, he is a successful businessman and his son Nicky also starred for Swindon Town.



#### DON ROGERS

England U-23 international winger Don Rogers scored twice in Swindon Town's 1969 League Cup final success. Signing professional at the County Ground in October 1962, he featured in

Swindon's 1962-63 promotion campaign and was ever-present in four successive seasons.

He starred as Swindon won promotion again in 1968-69 and the Anglo-Italian Cup in 1970, reuniting with Bert Head at Crystal Palace in November 1972.

Moving to QPR in September 1974, he rejoined Swindon in March 1976 and netted 148 goals in 412 League games overall for the Robins. He has since run his own sports shop in Swindon.



#### JOHN TROLLOPE

Long-serving left-back John Trollope holds Swindon Town's appearance record. Signing professional at the County Ground in July 1960, he made his League debut in Swindon's 1-1 draw at home to Halifax a month later and was ever-present in seven consecutive seasons including the 1962-63 promotion success. He featured in Swindon's 1968-69 promotion and League Cup 'double' campaign as well as their 1970 Anglo-Italian Cup final triumph. Scoring 21 goals in 770 League games, he was their coach, then manager between November 1980 and March 1983. Later Swindon's youth team boss, he was awarded the MBE.



#### COLIN CALDERWOOD

Commanding central defender Colin Calderwood was capped 36 times by Scotland after leaving Swindon Town. Initially with Mansfield Town, he moved to the County Ground in July 1985

and starred as Swindon won the Fourth Division title in 1985-86. He also helped the Robins to win promotion in 1986-87, then featured in two further play-off finals including their 1993 Wembley triumph. Scoring 20 times in 330 League games, he moved to Spurs in July 1993 and later appeared for Aston Villa and Nottingham Forest. He managed Northampton Town, Forest and Hibernian before assisting Chris Hughton at various clubs. He is presently Assistant Manager to Steve Bruce at Aston Villa.





## MANAGING TO SUCCEED

### LOU MACARI

Former Scotland international midfielder Lou Macari managed Swindon Town to the Fourth Division title in 1985-86. He won all three major Scottish honours with Celtic before moving to Manchester United in January 1973, featuring in three FA Cup finals including their 1977 triumph. Joining Swindon as player-boss in July 1984, he also guided them to promotion in 1986-87 and Second Division play-offs in 1988-89. He left in July 1989 to manage West Ham and briefly Birmingham before leading Stoke City to the Second Division title in 1992-93. Rejoining Celtic as boss, he later managed Stoke again and Huddersfield Town.



### GLENN HODDLE

Ex-England international midfielder Glenn Hoddle plotted Swindon Town's 1992-93 First Division play-off final triumph. Signing professional for Spurs in April 1975, he starred in their 1981 and 1982 FA Cup final successes and was a finalist again shortly before joining Monaco in June 1987. He helped win the French League title in 1987-88 and was appointed Swindon's player-boss in April 1991, scoring once in 64 League games while at the County Ground. Moving to Chelsea in a similar capacity in June 1993, he guided them to the 1994 FA Cup final and has since managed England, Southampton, Spurs and Wolves.



## CLASSIC CAMPAIGNS

### 1968-69

Don Rogers starred as Swindon Town achieved an epic League Cup and promotion double in 1968-69. Early pace-setters in the Third Division, they lost 1-0 at home to Watford in the title 'decider' watched by 28,898 and finished runners-up on goal average. Swindon defeated Torquay 2-1, Bradford City 4-3, Blackburn 1-0, Coventry 3-0, Derby 1-0 and Burnley 3-2 in the League Cup before beating Arsenal 3-1 after extra-time in the Wembley final. Peter Downsborough, Rod Thomas, John Trollope, Joe Butler, Frank Burrows, Stan Harland, Don Heath, Roger Smart, John Smith (Willie Penman), Peter Noble, Don Rogers.

### 1992-93

Player-manager Glenn Hoddle was a key figure in Swindon Town's 1992-93 First Division play-off final success. Swindon were early pace-setters and new signing Craig Maskell grabbed a hat-trick in a 4-1 win over Cambridge United. They went second after a 5-1 demolition of Notts County, then overcame a lean spell with Ross MacLaren's return inspiring a run of seven victories in nine games. Dave Mitchell netted three times in a 6-4 win at Birmingham and Swindon qualified for the play-offs in fifth position. They defeated Tranmere 5-4 on aggregate, then gained a thrilling 4-3 win over Leicester in the Wembley final.

### 1985-86

Swindon Town stormed to the Fourth Division title with a record 102 points in 1985-86. Lou Macari's side made a poor start in the League but defeated Sunderland and Sheffield Wednesday en route to the Milk Cup fourth round. Kenny Allen arrived from Torquay and Dave Bamber from Portsmouth as Swindon soared to the top of the table with 14 wins in 16 matches. They set a club record of 13 consecutive home victories with a 3-1 win over Burnley and clinched the title with a 1-1 draw at Mansfield. Charlie Henry and Colin Gordon scored 35 goals between them, while skipper Colin Calderwood was ever-present.

### 1995-96

Swindon Town stormed to the Second Division title under player-boss Steve McMahon in 1995-96. They had plummeted from the top-flight to Second Division and newcomers included Wayne Allison, Steve Finney and Mark Seagraves. Swindon were early leaders, winning seven of their first nine games, and Kevin Horlock netted a hat-trick in a 4-1 victory at Bristol Rovers. They remained in pole position and took Southampton to an FA Cup fifth round replay. Ian Culverhouse and Mark Robinson were ever-present, while leading scorer Wayne Allison and Shaun Taylor also starred as they won the title by nine points.



**DON'T WORRY IF  
SANTA FORGOT YOU.  
WE STILL HAVE  
A FEW COPIES LEFT**



*Find out what happened to  
John Rudge's pants!*

*Read about a Vale employee  
& a local journalist  
receiving SAS training  
at Blackpool*

*Tom Pope tells us about  
former Vale keeper  
Stuart Tomlinson's  
chocolate cream doughnut*

*Who gave Gary Roberts  
a dressing room haircut?*

*'Methodist Preacher  
Assaults Woman In Bath'*

*Mike Pejic almost killed me!*

*And much, much more!*

Great value at **£12.99**

*Includes stories from  
John Rudge, Phil Sproson,  
Andy Porter, Ray Williams,  
Mick Cullerton, Adam Yates,  
Tom Pope, Louis Dodds  
and YOU, the supporters!*

# **Fifty Shades**



**of**



## **BLACK & WHITE**

**TALES FROM THE VALE**

by the fans (and one or two well-known names)



**AVAILABLE IN THE CLUB SHOP**



LINDON ROBERTS:  
PORT VALE VOLUNTEERS' GROUP

# CARDS & COLLECTABLES

## WARTIME GUESTS

During both of the World Wars the Football League operated with regional leagues and reduced numbers of teams as many of the players were in the armed forces and therefore away from their clubs and the area in military camps. However this allowed them to play for a team that was local to their camp and hence many played for a number of teams during the war period, many for maybe only one game. JF Sporting Collectibles of Leicester have produced 4 sets of 36 cards each that picture some of the players who did this and the teams that they guested for and a number of these players have Vale connections.

The first player featured is Alf Bellis who had joined Vale in 1938 and during the war featured, during 1940-44 when Vale were inoperative, for Rochdale, Notts County, Manchester City, Lincoln City and Manchester United who he is featured guesting for on this card as he played 48 games for them.



When Vale resumed in 1944-45 season he top scored but still guested for Luton during 1945-46. He was transferred in January 1948 to Bury after a total of 158 games for Vale with 46 goals to his credit.

Next is Ivor Powell who was playing for QPR at the outbreak of the war and guested for Bradford City and Blackpool from 1941 to 1943 making 30 appearances for the Seasiders. After the war he moved to Aston Villa before being appointed player/manager at the Vale in July 1951 but only managed 6 games before being injured and concentrating on managing but his stern approach



was not liked by the players and by November Vale were bottom of the table and Powell was sacked. He was eventually successful at Carlisle United getting them promoted in 1961-62. He had a spell in Greece before coaching at the University of Bath where he entered the Guinness Book of World Records as the oldest working football coach on his 90th birthday after 55 years as a coach. He retired on 26 May 2010, aged 93 and died 2 years later in 2012.

The final player is Freddie Steele who was the Stoke and England centre-forward in the 1930s and 40s but during the war put in 11 appearances for Arsenal. He also guested for Sheffield United, Northampton Town, Notts County, Leicester City, Doncaster Rovers, Bradford Park Avenue, Leeds United, Nottingham Forest and Fulham as well as the Gunners.



He replaced Powell as player/manager at Vale Park in December 1951 and made 25 appearances scoring 12 goals before concentrating on managing Vale through their glory period of the mid 1950s.

**Lindon Roberts**  
Port Vale Volunteers Group



DAVE JOHNSON

# KITTED OUT



## PORT VALE FOOTBALL CLUB



### 1898-99 PORT VALE

LEAGUE:

**DIVISION TWO**

FINAL POSITION:

9th

BIGGEST WIN:

21st January 1899

**PORT VALE 6**  
**BARNSELY 1**

BIGGEST LOSS:

3rd December 1898

**MANCHESTER CITY 3**  
**PORT VALE 1**

21st February 1899

**GRIMSBY TOWN 3**  
**PORT VALE 1**

Port Vale known as  
Burslem Port Vale

### 1926-27 PORT VALE

LEAGUE:

**DIVISION TWO**

FINAL POSITION:

8th

BIGGEST WIN:

2nd April 1927

**PORT VALE 7**  
**FULHAM 1**

BIGGEST LOSS:

13th November 1926

**FULHAM 6**  
**PORT VALE 1**

### 1985-86 PORT VALE

LEAGUE:

**DIVISION FOUR**

FINAL POSITION:

42th

BIGGEST WIN:

30th September 1985

**PORT VALE 4**  
**HARTLEPOOL UTD 0**

5th October 1985

**PORT VALE 4**  
**WREXHAM 0**

19th October 1985

**PORT VALE 4**  
**SOUTHEND UTD 0**

BIGGEST LOSS:

1st January 1986

**CHESTER CITY 4**  
**PORT VALE 1**

### 1997-98 PORT VALE

LEAGUE:

**DIVISION ONE**

FINAL POSITION:

19th

BIGGEST WIN:

3rd May 1998

**HUDDERSFIELD 0**  
**PORT VALE 4**

BIGGEST LOSS:

18th April 1998

**IPSWICH 5**  
**PORT VALE 1**

### 1991-92 PORT VALE

LEAGUE:

**LEAGUE TWO**

FINAL POSITION:

11th

BIGGEST WIN:

30th April 2011

**PORT VALE 7**  
**MORECAMBE 2**

BIGGEST LOSS:

25th August 2010

(League Cup)  
**FULHAM 6**  
**PORT VALE 0**



OVER THE YEARS SHIRT STYLES HAVE EVOLVED, NOT ALWAYS FOR THE BETTER. SOME TEAMS HAVE CHANGED THEIR KIT COLOURS MANY TIMES, THOUGH NOWADAYS MOST TEND TO RETAIN THE SAME BASE COLOURS, BUT DOES THE CHOICE OF KIT AFFECT PERFORMANCES ON THE FIELD OF PLAY? THERE IS NO DEFINITIVE ANSWER TO THAT QUESTION, BUT IN THIS SERIES DAVE JOHNSON TAKES A LOOK AT VARIOUS KITS OF OUR OPPONENTS AND TAKE A LOOK AT A FEW OF THE STATS.



## SWINDON TOWN FOOTBALL CLUB



**1898-99  
SWINDON**

LEAGUE:  
**SOUTHERN LEAGUE**

FINAL POSITION:  
**9th**

BIGGEST WIN:  
31st December 1898  
**SWINDON 4  
TOTTENHAM 3**

BIGGEST LOSS:  
24th December 1898  
**SOUTHAMPTON 4  
SWINDON 0**



**1926-27  
SWINDON**

LEAGUE:  
**THIRD DIVISION (S)**

FINAL POSITION:  
**5th**

BIGGEST WIN:  
4th December 1926  
**SWINDON 6  
CRYSTAL PALACE 1**

BIGGEST LOSS:  
18th September 1926  
**BRIGHTON H&A 9  
SWINDON 3**



**1985-86  
SWINDON**

LEAGUE:  
**DIVISION FOUR**

FINAL POSITION:  
**1st**

BIGGEST WIN:  
5th October 1985  
**SWINDON 4  
ROCHDALE 0**

BIGGEST LOSS:  
26th November 1985  
(League Cup)  
**IPSWICH 6  
SWINDON 1**



**1997-98  
SWINDON**

LEAGUE:  
**DIVISION ONE**

FINAL POSITION:  
**18th**

BIGGEST WIN:  
6th December 1997  
**SWINDON 4  
OXFORD UNITED 1**

BIGGEST LOSS:  
11th March 1998  
**MIDDLESBRO' 6  
SWINDON 0**



**2010-11  
SWINDON**

LEAGUE:  
**LEAGUE ONE**

FINAL POSITION:  
**16th**

BIGGEST WIN:  
6th November 2010  
(FA Cup)  
**PLYMOUTH 0  
SWINDON 4**

BIGGEST LOSS:  
26th February 2011  
**SOUTHAMPTON 4  
SWINDON 1**

The kits shown on these pages are printed with kind permission from Historical Kits: [www.historicalkits.co.uk](http://www.historicalkits.co.uk)





# Baskeyfield House

Angels Way, Middleport, Stoke-on-Trent



Baskeyfield House is a development of apartments available exclusively for the over 55s, situated just one mile from Vale Park.

Our two-bedroom apartments are perfect for those looking to downsize or simply enjoy retirement as part of a vibrant community. As well as enjoying your own beautifully designed apartment, Baskeyfield is also home to excellent communal facilities which include a games room with a pool table, convenience store, communal lounge, hairdressers and cafe open from 9am-3:30pm daily.

Apartments are available to buy via our flexible shared ownership scheme and prices start from just £28,750 for a 25% share.

**01782 958 555**

[www.sanctuary-retirement-living.co.uk](http://www.sanctuary-retirement-living.co.uk)

[baskeyfield.house@sanctuary-housing.co.uk](mailto:baskeyfield.house@sanctuary-housing.co.uk)



**SANCTUARY**  
RETIREMENT LIVING



Don't just take our word for it, come and see for yourself. This voucher entitles you to a

**FREE HOT DRINK AND CAKE**  
of your choice from our on-site café.



Please submit this voucher at the till. Vouchers are valid for one hot drink and one cake per voucher and is valid until 30 April 2017.



# Wickes

Let's do it right

# WIN at home with Wickes



Because support begins at home

WIN the **ultimate fan VIP experience** for you and 3 friends.

Watch your team train and have a private tour of the training ground.

To enter visit  
**[www.wickes.co.uk/competitions](http://www.wickes.co.uk/competitions)**

The Promotion runs from 12.00 GMT on 1st March 2017 and closes 23.59 GMT on 17th March 2017. 72 winners each win 4 tickets to join their local EFL team for a VIP experience to take place during EFL Championship, League One & League Two 2016 - 2017 season. 71 prizes will be rewarded and selected from 1 prize draw through [www.wickes.co.uk/competitions](http://www.wickes.co.uk/competitions). 1 prize will be rewarded through TalkSport's promotion, 'Ultimate Fan Competition'. This Promotion is only open to legal residents of the United Kingdom who are aged 18 years or over, excluding employees of the Promoter, their immediate families, their agents or anyone professionally associated with this Promotion. Maximum one entry per person. No purchase is necessary; however, internet access is required. For full terms & conditions visit [www.wickes.co.uk/competitions](http://www.wickes.co.uk/competitions). Promoter: Wickes - Wickes Head Office, Vision House, Colonial Way, Watford, WD24 4JL.



PHIL SHERWIN'S

# Today's the Day

March 11

## PORT VALE STATISTICIAN PHIL SHERWIN LOOKS AT EVENTS THAT HAPPENED ON THIS DAY.

The Vale have met Swindon Town before on 11th March. It was back in the 1977/78 season when we were battling against relegation from Division Three – sound familiar? Vale won 1-0, a result we are desperate for this afternoon, with Neville Chamberlain scoring the winner in only his second start for the club. Vale defender John Lumsden also made his debut in that game, the significance of that being he was on loan from Stoke City, and we haven't loaned a player from our neighbours in the 39 years since. Although we won that game, we only won once again that season and were relegated.

Our last game on 11th March was in the 2007/08 season when we won 2-0 at Crewe Alexandra to end a run of ten games without a win in League One. Can we do likewise on 11th March this year? Paul Harsley gave us the lead in the 57th minute from the penalty spot with former Crewe striker Luke Rodgers scoring against his

old club nine minutes from time. Not surprisingly Crewe had four players in their side with Vale links, former defender George Abbey and future players Michael O'Connor and **TOM POPE**, with Byron Moore coming on as a substitute. We eventually went down.

Swindon were also in League One and on the same afternoon lost 2-1 at Leyton Orient. An Alton Thelwell own goal gave them a 20th minute lead but two Adam Boyd goals within four minutes early in the second half, one a penalty, won it for the O's. The Orient side had two former Vale players on the bench, winger Wayne Corden and loan striker Wayne Gray.

On 11th March 1989 Vale were second in what is now called League One and on paper faced a seemingly easy game at second bottom Aldershot, who had lost their previous five games. Not so. **STEVE CLARIDGE** hit the post and seven minutes into the second



half Dave Puckett stabbed home a close range effort to put the Shots in front. Six minutes later it was 2-0 when Glenn Burvill scored with a diving header. Vale gradually came into it and pulled a goal back when Ron Futchler stroked home a 73rd minute penalty, given for hand ball. Five minutes from time Vale drew level when a Gary West header was slotted home by Robbie Earle, nowadays based in America. The game ended 2-2. Vale went on to gain promotion via the play offs, whilst Aldershot were relegated after finishing bottom.

Swindon were a division higher than the Vale and on the same afternoon beat Hull City 1-0 at the County Ground. Duncan Shearer scored the only goal of the game.





The Swindon team included future Vale central defender Tim Parkin whilst their left back was Paul Bodin, our assistant manager last season.

Vale drew 1-1 in a league game against Manchester United at Old Trafford on March 11th. Yes, you may have guessed it was a while ago, a Second Division game in 1933. James McGrath scored the Vale goal with Ernie Hines on the mark for United.

Swindon were in Division Three (South) in those days, and lost 5-1 at Brighton on the same day. George Hayes scored his only goal for Swindon, but goals from Townsend 2, Thompson, Farrell and Wilson won the day.

On 11th March 1995 Vale were in the championship and eased their relegation fears by beating struggling Bristol City 2-1 at Vale Park. Kevin Scott, a central defender on loan from Spurs, gave us an 8th minute lead only for Gary Owers to level two minutes later. Tony Naylor got the winner for us fifteen minutes from time. Vale eventually finished in 17th place whilst Bristol City went down.

Swindon Town accompanied Bristol City on their way down, and on the same afternoon lost 2-0 at Watford. Andy Hessenthaler and **KEVIN PHILLIPS** scored their goals. It was a good season for Swindon in the cups though, as they reached the semi-finals of the League Cup losing to Bolton Wanderers and the 5th round of the FA Cup.



# In other news on this day

**1708**

Queen Anne vetoed a proposed bill through parliament that would have armed the Scottish Militia. It is the last time a monarch has vetoed a proposed bill. If they vote to leave the UK they can do it themselves anyway.



**1916**

Harold Wilson was born. He was Labour Prime Minister twice, a Huddersfield Town fan and proud of the fact that England won the World Cup when he was at Number 10 Downing Street.



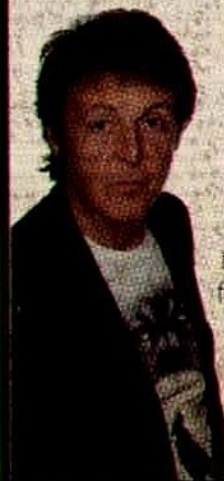
**1935**

Hermann Goering officially created the Luftwaffe, the German air force. There wasn't much left of it ten years later.



**1997**

Paul McCartney was knighted by the Queen for services to music.



The Daily Courant



**1702**

The first English newspaper was published, the Daily Courant. It was just a single page, the reverse of which was all adverts. It lasted until 1735 when it was swallowed up by the Daily Gazetteer.

**1918**

The first case of Spanish flu was reported. In a two year period it killed between 50 and 100 million people worldwide. It was called Spanish flu as they were the first to identify it as they weren't involved in the First World War. It affected Germany, Britain and the USA for instance, but they had a block on announcing such things in the interests of morale.

**1988**

The British pound note ceased to be legal tender, being replaced by the pound coin. That is having a makeover as well later this month.



**2011**

An earthquake in Japan triggered a tsunami, destroying the Fukushima power plant, killing 16,000 people and leaving over 430,000 homeless.





# One month's electricity **FREE!**



## WHAT A SAVE!

Pay less than you're being charged by the Big 6 energy suppliers – make the simple switch to Solarplicity. Register before March 31 and you'll receive one month's free electricity.\*

**Text 'FREEMONTH' followed by the name of your club and your name to 82228 to register and find out more."**

**[www.solarplicity.com](http://www.solarplicity.com)**



\*Offer open until March 31, 2017. One month's free electricity is calculated as an 8% discount to the average of the standard variable tariffs of the UK's six largest electricity suppliers for your region, which are in force on the first day of the month in which you become a customer. \*\*Texts charged at standard rate.



# SICK OF NOT GETTING A STRAIGHT ANSWER?

*Price your own windows now at*  
**[www.lifestyledesigns.org](http://www.lifestyledesigns.org)**

## AND GET AN INSTANT QUOTE!

**Buying direct from a manufacturer could save you a fortune!**

**■ NO SALESMEN ■ NO PRESSURE ■ NO GIMMICKS**



**Just Honesty, Professionalism  
and Great Value for Money**

The Very Highest Quality & Standards  
From A Single Window To  
A Complete House  
Huge Range Of Styles & Colours

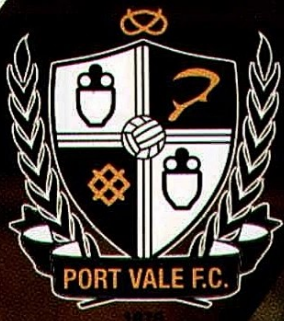
Fully welded 5 chamber system  
Internally beaded  
High security locking  
Fitted by our own tradesmen  
Established 1992

**Stoke 01782 432 138**  
**Crewe 01270 441 264**

**Congleton 01260 549 286**  
**Leek 01538 713 338**

Factory/Showroom: Unit 2G, Brown Lees Road Ind. Est., Forge Way, Knypersley ST8 7DN (Between Stoke & Congleton)





KIKO



Please sign here:

20



# BALLS TO WORKING THE WEEKEND

**IT'S FOOTBALL TIME!**



**THE FOOTBALL SPONSOR  
WITH BALLS**



**Follow @IrnBruFootball for your chance to win EFL tickets**



# POST & NOTICES

## GET NOTICED IN 'THE VALE MAG'

If you wish to appear in 'THE VALE MAG' with any event, celebration, news, what's happening in your area or an appeal, please send an email to [dave.johnson@port-vale.co.uk](mailto:dave.johnson@port-vale.co.uk). Remember to tell us all about it and attach a suitable picture (if required) and we'll get you noticed in 'THE VALE MAG'.

## PORT VALE WEDDING FAYRE



**SUNDAY 9th APRIL 2017**  
**11am - 3.30pm**

Lots of fabulous wedding suppliers on the day:

|                |                |
|----------------|----------------|
| Wedding Cars   | Cake Designs   |
| Bridal Wear    | Stationery     |
| Groom Attire   | Sweet Carts    |
| Photography    | Hair & Make-up |
| Venue Dressers | AND Much More  |
| Florists       |                |



*It starts with a  
romantic proposal...*



*... and leads to the  
ultimate fairytale wedding*



**PORT VALE FOOTBALL CLUB**

HAMIL ROAD, BURSLEM, STOKE ON TRENT

**TEL: 01782 655823**

email: [sharon.warrender@port-vale.co.uk](mailto:sharon.warrender@port-vale.co.uk)

## TODAY'S MASCOTS



**GEORGE  
JOHN  
WALTON**

**FROM:** Trentham

**AGE:** 6 years old

**SCHOOL:** The Priory, Trentham

**FAVOURITE PLAYER(S):**

Sam Kelly

**HOBBIES:** Football & Cricket



**BILLY  
CLAMP**

**FROM:** Swindon

**AGE:** 7 years old

**SCHOOL:**

St Leonards Primary

**FAVOURITE PLAYER(S):**

Nathan Thompson

**HOBBIES:** Playing football for Swindon Academy and Highworth Juniors

**ADDITIONAL INFO:** Billy is a massive Swindon Town supporter. He went to his first game when he was just 4 months old! You will always hear him singing all the songs from right at the back of the stands!



## WANT TO BE A MASCOT?

If you would like to be an official mascot, visit the Port Vale Club Shop where you will be required to fill out the relevant forms and pay a small deposit to secure your place.

The mascot's information and photograph will need to be provided to Port Vale Club Shop no later than two weeks prior to the game.

We highly recommend booking your preferred match in advance as popular games can get booked up very quickly.

The photographs and DVD can be collected from the Port Vale Club Shop approximately 2/3 weeks after the match.

Please contact the Club Shop on

**01782 655822**

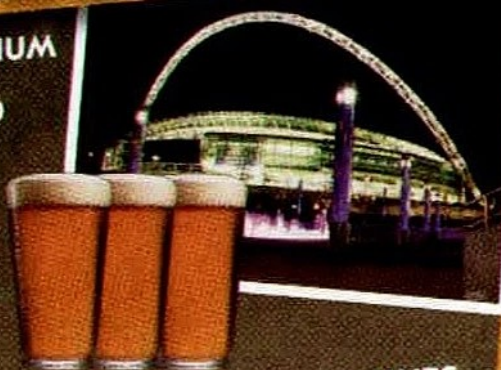


DAVE JOHNSON

# ODDS & BITS

## DID YOU KNOW?

WEMBLEY STADIUM IS CAPABLE OF SERVING 160,000 PINTS AN HOUR FOR THIRSTY SUPPORTERS.



IN A WEST HAM v WOLVES MATCH IN 1970, BOBBY MOORE MANAGED TO KNOCK OUT A REFEREE WITH AN ATTEMPTED CLEARANCE.



(GLASGOW) RANGERS ARE NAMED AFTER AN ENGLISH RUGBY TEAM.



## WHAT ARE THEIR NICKNAMES?

ANSWERS AT THE FOOT OF THE PAGE



**AYR UNITED**



**DUNDEE UNITED**



**EVERTON**



**EXETER CITY**

## QUOTES

"HE HIT THE POST, AND AFTER THE GAME PEOPLE WILL SAY, WELL, HE HIT THE POST."

JIMMY GREAVES



"AT THE END OF THE DAY, THE ARSENAL FANS DEMAND THAT WE PUT ELEVEN PLAYERS ON THE PITCH."

DON HOWE



"HE IS A VERY DANGEROUS MAN, AS WELCOME AS A PIRANHA FISH IN A BIDET."

JESUS GIL (REFERRING TO HUGO SANCHEZ)





## FACTS YOU MAY NOT KNOW

IN THE 1850'S THE ENTRANCE EXAM FOR THE ROYAL NAVY INVOLVED WRITING OUT THE LORD'S PRAYER AND JUMPING OVER A CHAIR NAKED.

THE WORD NIKE COMES FROM GREEK MYTHOLOGY. NIKE IS THE GODDESS OF VICTORY AND WAS OFTEN DEPICTED AS A SMALL WINGED FIGURE WHOM THE GODDESS ATHENE CARRIED

LEAVING THE WATER RUNNING WHILE BRUSHING YOUR TEETH CAN WASTE FOUR GALLONS OF WATER IN A MINUTE

## FANCY THAT!

### BALOTELLI CAN BE TRUSTED WITH KIDS

Manchester City striker Mario Balotelli stormed into the office of a headmaster in 2011. A young fan asked Balotelli for an autograph at training which prompted the Italian to ask why he wasn't at school. The fan explained he was being bullied which prompted Balotelli to go to the school with the boy and his mother and demand to see the headmaster to sort the incident out.

### YOU'RE JOKING!

Back in 2002 the Chile Under-20 squad were fined for laughing. The country's FA decided to punish the players as someone told a joke which caused the whole squad to fall about laughing. The coach complained as he struggled to regain authority and control after the joke had been told.

### MIND YOUR HEAD

Ronnie Simpson of Celtic was hit on the head by a brick as he warmed up for a match against Racing Club of Argentina in 1967. As he went about his pre-match routine, a fan threw the brick in his direction. He was subsequently injured and couldn't continue which meant he was replaced by reserve player John Fallon.



## MORE NICKNAMES

FC BAYERN MUNICH (GERMANY)  
**DIE ROTEN**  
(THE REDS)



REAL MADRID (SPAIN)  
**LOS BLANCOS**  
(THE WHITES)  
**LOS VIKINGOS**  
(THE VIKINGS)



GALATASARAY (TURKEY)  
**ASLANLAR**  
(THE LIONS)



SWINDON TOWN



TAMWORTH

## THEY CHANGED THEIR NAME

THEY WERE ONCE KNOWN AS ARDWICK



# 600 ARTIFICIAL GRASS PITCHES

Since 2000, the Football Foundation has invested in £1.3 billion of grassroots sports projects and has developed more than 600 artificial grass pitches, 1,000 changing pavilions and 3,000 natural grass pitches.

Find out more at:  
[footballfoundation.org.uk](http://footballfoundation.org.uk)



— FUNDING PARTNERS —

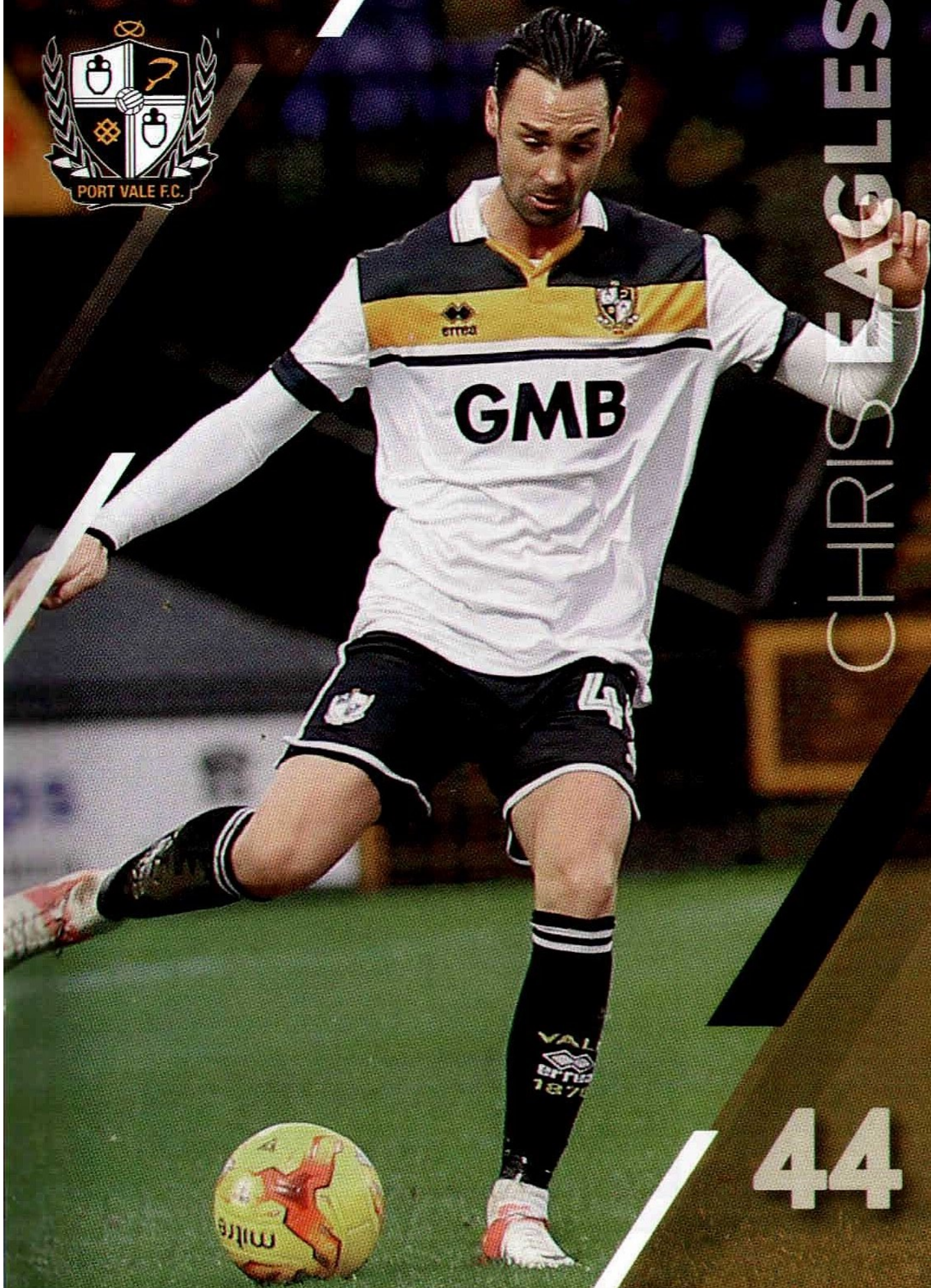
**Football**   
**Foundation**

[www.footballfoundation.org.uk](http://www.footballfoundation.org.uk)  
[@FootballFoundtn](https://twitter.com/FootballFoundtn)  
[Youtube.com/Footballfdn](https://www.youtube.com/Footballfdn)  
[flickr.com/footballfoundation](https://www.flickr.com/footballfoundation)  
[linkedin.com/football-foundation](https://www.linkedin.com/football-foundation)  
[instagram.com/footballfoundation](https://www.instagram.com/footballfoundation)

Charity No: 1079309 Company No: 3876305

The Football Foundation is the UK's largest sports' charity. Funded by the Premier League, The Football Association and the Government, via Sport England.





CHRIS EAGLES

44





# PORT VALE 1

HOOPER (58 MINUTES)



# BRADFORD CITY 2

VINCELOT (41), JONES (74)



## PORT VALE:

38 Leo FASAN  
2 Ben PURKISS  
10 JJ HOOPER  
11 Sam FOLEY  
12 Daniel PUGH  
14 Jerome THOMAS  
15 Anton FORRESTER  
20 Kiko  
24 Nathan SMITH  
25 Callum GUY  
44 Chris EAGLES

## SUBSTITUTES:

7 Sam KELLY  
18 Dan TURNER  
19 Scott TANSER  
23 Ryan BOOT  
27 Sebastien AMOROS  
30 Gezim SHALAJ  
46 Olarnide SHODIPO

## BRADFORD CITY:

1 Colin DOYLE  
3 James MEREDITH  
4 Nicky LAW  
6 Romain VINCELOT  
9 Charlie WYKE  
10 Billy CLARKE  
11 Jordy HUWULA  
14 Josh CULLEN  
22 Nat KNIGHT-PERCIVAL  
23 Rory McARDLE  
29 Tony McMAHON

## SUBSTITUTES:

2 Stephen DARBY  
5 Kevin TONER  
8 Timothee DIENG  
12 Rouven SATTELMAYER  
18 Alex GILLIAD  
19 Alex JONES  
24 Danny DEVINE

MATCH REPORT: DAVE JOHNSON | PHOTOS: GERARD AUSTIN

Alex Jones hit the decisive goal of the game to deny Vale a point as Bradford went away with a 2-1 win, as the former Vale loanee hit his seventh goal at Vale Park this season.

The previous six had all been in Vale colours of course, but perhaps it was written in the script that the former Birmingham City man would come off the bench to break Vale's hearts. Romain Vincelot had put the Bantams in front in the 41st minute, but an improved second half performance from the Valiants saw JJ Hooper level the scores, however, it was Jones who had the final say.

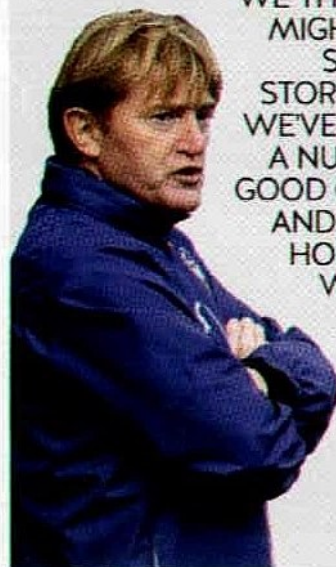
"IT IS EXTREMELY DIFFICULT TO TAKE, BUT WE HAVE TO TAKE THE POSITIVES OUT OF IT. WE KEEP SAYING THIS BUT GOING FORWARD WE HAVE TO GET RESULTS. "I WOULD RATHER TAKE A POOR PERFORMANCE AND COME AWAY WITH SOME POINTS. I THOUGHT THE SECOND HALF WAS EXCELLENT FROM US AGAINST A GOOD BRADFORD SIDE WHO TRIED TO GAIN CONTROL."

MICHAEL BROWN



WE HAVE PROBABLY PLAYED BETTER THIS SEASON AND NOT WON, BUT WE KNOW THE RESULT IS THE MAIN THING AT THIS STAGE OF THE SEASON. AFTER TWENTY MINUTES OR SO, WE THOUGHT IT MIGHT BE THE SAME OLD STORY FOR US. WE'VE CREATED A NUMBER OF GOOD CHANCES AND WE JUST HOPED THEY WOULDN'T COME BACK TO HAUNT US."

STUART McCALL



## MATCH STATS

|     |                  |     |
|-----|------------------|-----|
| 50% | POSSESSION       | 50% |
| 18  | FOULS            | 15  |
| 1   | CORNERS          | 3   |
| 1   | OFFSIDES         | 2   |
| 7   | SHOTS ON TARGET  | 4   |
| 5   | SHOTS OFF TARGET | 8   |

Key: Goalscorer

Yellow Card

Red Card

First Sub

Second Sub

Third Sub





# PORT VALE v BRADFORD CITY



VALE PARK

CHRIS EAGLES TRIES HIS LUCKY  
EARLY ON IN THE GAMEDANNY PUGH  
MAKES AN  
INTERCEPTIONNATHAN SMITH  
MAKES HIS  
PRESENCE FELTFORMER VALE LOANEE ALEX  
JONES DOES THE DAMAGE

JJ HOOPER LEVELS THE SCORES

SAM FOLEY  
SETS OFF ON A  
SURGING RUN



# Can your business help inspire our future talent?

**WE ARE LOOKING FOR SPONSORS TO JOIN OUR AMAZING AWARD-WINNING COMPETITION, NOW IN ITS FIFTH YEAR.**

## Sponsor benefits include:

- Encouraging the next generation of business talent from local schools
- Publicity from October 2016 to July 2017
- Prestigious sponsors panel
- High level networking
- Excellent social media exposure

*"Working with today's students to produce tomorrow's talent is richly rewarding. I would recommend sponsorship to any business."*

Mick Whitehead, MD, M&M Group

If you would like to sponsor or would like more information, please contact:

Jenny Conlon - [j.conlon@kmf.co.uk](mailto:j.conlon@kmf.co.uk)



In 2017 we will be challenging schools to unleash their creativity through LEGO® Education.

LEGO® Education brings together a vast range of skills and is packed full of science, literacy, computing, design technology, engineering and maths related resources including robotics.

KMF in partnership with industry and education, continues to raise aspirations and enhance career development.



CREATE



IMAGINATE



CONFEY



In association with:



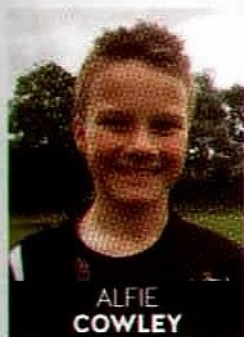
[www.kmf.co.uk](http://www.kmf.co.uk) @kmfmetal





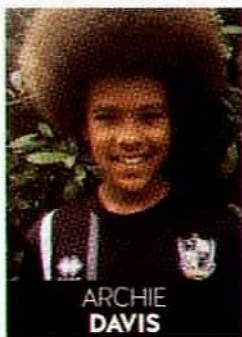
# 2016/17 ACADEMY SPONSORS

ACADEMY SPONSORSHIP IS NOW AVAILABLE.  
SPONSORSHIP FORMS ARE AVAILABLE FROM THE CLUB SHOP



ALFIE  
COWLEY

SPONSORED BY  
XTRAWELD  
[www.xtraweld.com](http://www.xtraweld.com)



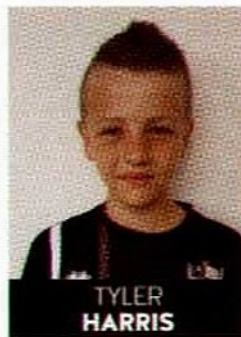
ARCHIE  
DAVIS

SPONSORED BY  
WWW.  
THEFLAPEOPLE  
.CO.UK



FRANKIE  
DEVEREUX

SPONSORED BY  
CROSSLINESPORTS  
.CO.UK



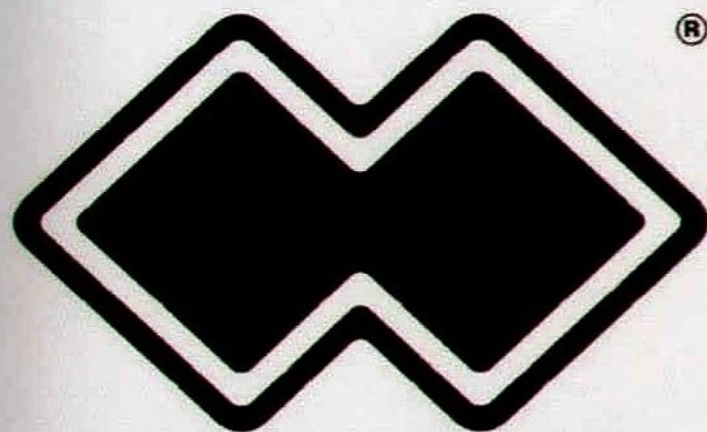
TYLER  
HARRIS

SPONSORED BY  
FLAMESURGE UK LTD  
RETAILER &  
INSTALLER OF WOOD  
BURNING STOVES



DOMINIC  
BROOK

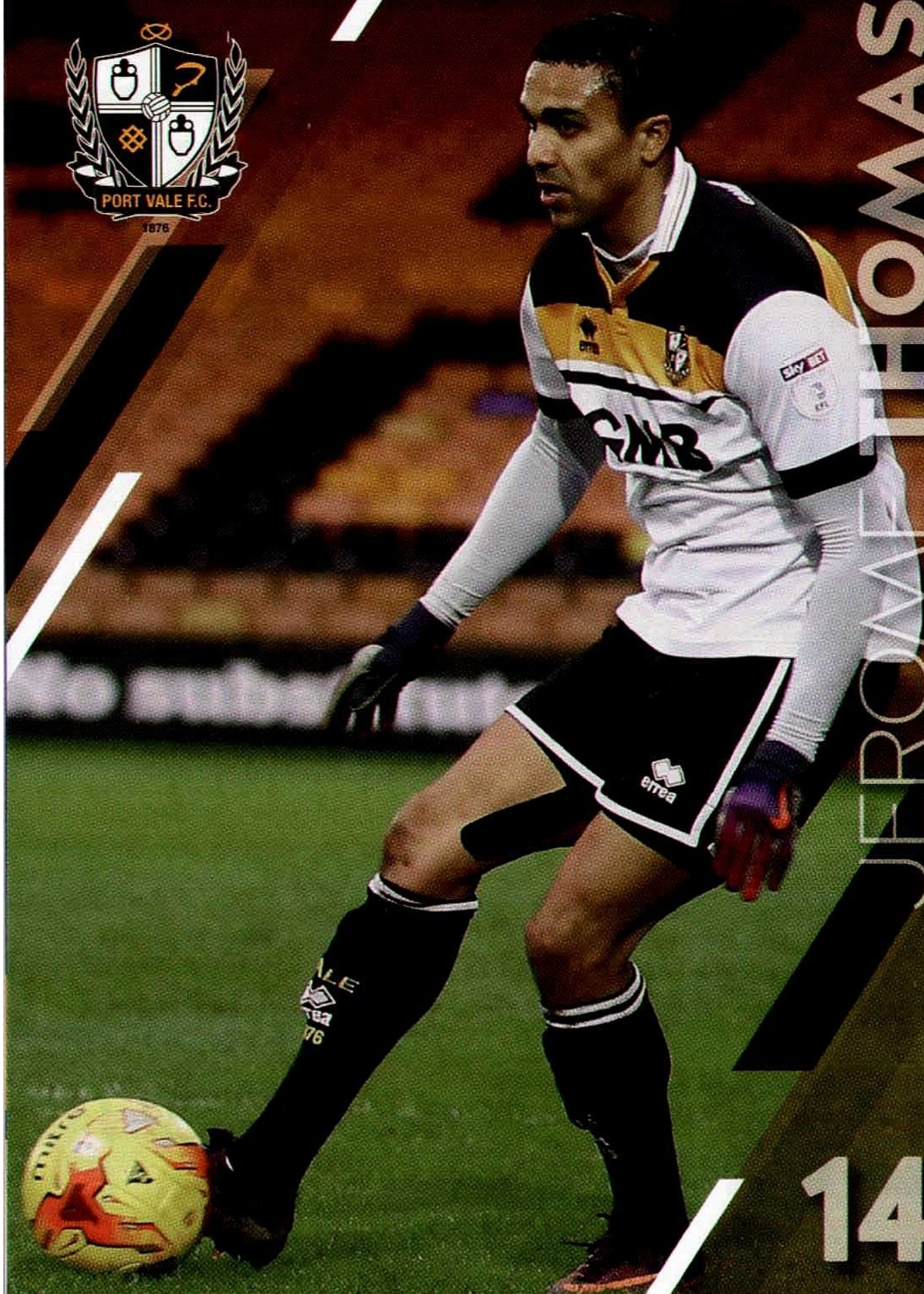
SPONSORED BY  
CARVE INTERIORS  
(TEL 01782 819277)



# errea

**PROUD  
SPONSORS  
OF  
PORT VALE  
FOOTBALL  
CLUB**





JERROWALE THOMAS

14





caudwell  
children

Changing Children's Lives



## CLIMBING KILIMANJARO FOR CAUDWELL CHILDREN.

Vale supporter Georgia Owen, aged 18, has set herself a massive personal challenge. She is going to climb Kilimanjaro from June 1st - June 11th this year, helping to raise funds for Caudwell Children.

Georgia, who has been a season ticket holder at the Vale for the past ten years, is hoping to raise as much money as she can for the local charity and we are sure fellow Vale fans would like to help her reach her financial goal.

Located in Tanzania Mount Kilimanjaro is Africa's highest Mountain and one of the world's most iconic peaks! Standing at 5,895 meters, it will take a 10 day trip to reach the summit and return to home soil!

Caudwell Children help children who are desperately ill and whose families cannot afford, or cannot get the help they so desperately need anywhere else.

With your help we can change so many children's lives and enable them to reach their full potential.

Your donations, no matter how big or small, will help to transform the lives of disabled children across the UK in desperate need.

This can be anything from providing equipment, therapy for a child with autism or a trip to Florida for terminally ill children so their dream can come true!

If you feel you can help, please visit Georgia's just giving page and donate whatever you can.

[www.justgiving.com/fundraising/georgia-owen1](http://www.justgiving.com/fundraising/georgia-owen1)



**Now open til 6am  
Mon/Thurs/Fri & Sat**

**FREE  
Entry  
& drinks  
from £1  
b4 11.00pm  
on selected beers**

**ST1**

**PLATINUM**

**LAP DANCING CLUB**

Trinity Street, Hanley, Stoke-on-Trent  
01782 260300 / 07816 290628

**Check out our website: [www.st1-lapdancing.com](http://www.st1-lapdancing.com)**





PORT VALE

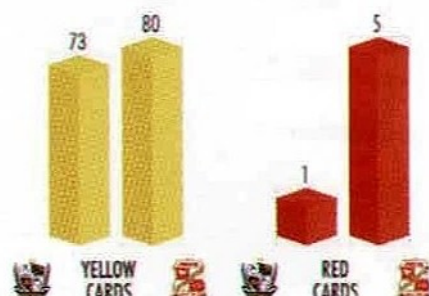
V

SWINDON TOWN



## MATCH FACTS

These two sides have never played out a goalless draw at home in 39 previous league encounters.



## MATCH FACTS

The Robins have won eight of their last 10 league games against Port Vale (D1 L1).



GOALS



AV. GOALS PER GAME



SHOTS (EX. BLOCKED)



% SHOTS ON TARGET



CLEAN SHEETS



% GOALS TO SHOTS



CORNER KICKS



GOALS CONCEDED



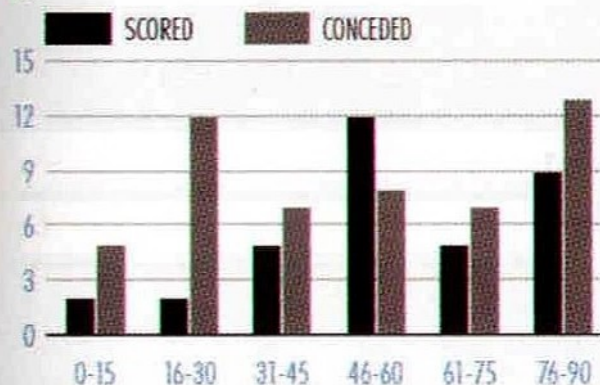
AV. GOALS CONCEDED PER GAME



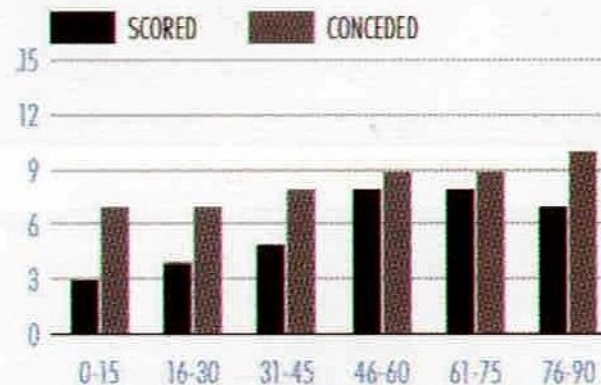
FOULS



## GOAL TIMES



## GOAL TIMES





# HALF TIME QUIZ

We don't set easy questions, so if you don't feel you are up to it, turn the page now! Here are 16 general football questions, some with multiple answers – see how you and your mates can do between you. You can score a maximum of forty points. How well can you do?

**YOUR  
SCORE**

**/ 40**

1. In which four countries did Ernst Happel win the league title as a coach? Which team did he lead to a World Cup Finals tournament? (5)

1

2

3

4

5

2. In the penalty shoot-out between Manchester United and Sunderland that settled their 2011 League Cup semi-final, how many of the ten penalty kicks were scored? (1)

1

3. Who scored Manchester City's winner as they lifted the 1970 League Cup by beating West Bromwich Albion? Who had City seen off in a tight two-legged semi-final? (2)

1

2

4. Which newspaper labelled Bobby Robson a 'lightweight on the international stage' before the 1990 World Cup Finals and a national hero on his return? (1)

1

5. Which strike duo fired Wigan Athletic into the Premier League in 2004-05. Scoring 24 and 21 goals in the Championship? Who was the Club's left back, destined for an international future? (3)

1

2

3

6. Name the four Dutch players who STARTED the 1973 European Cup Final and BOTH the 1974 and 1978 World Cup Finals. (4)

1

2

3

4

7. Who is the only player to have played in three World Cup Finals? (1)

1



8. Which two horse racing connected Irish tycoons bought a £30m stake in Manchester United in 2001? What was the name of the racehorse over which they had a falling out with Alex Ferguson? (3)

1

2

3

9. Who did Tottenham Hotspur beat in a Wembley FA Cup semi-final in 1991? Who opened the scoring with a 35 yard free kick? Which player scored the other two Tottenham goals? Who were the two managers? (5)

1

2

3

4

5

10. Which two former Tottenham midfield Hotspur stars appeared for Swindon Town in the League One play-off Final against Leicester City in 1992-93? Which Scottish centre-half moved in the opposite direction later that summer? (3)

1

2

3

11. Which veteran Derby County and Manchester City players were the only ever joint winners of the PFA Player of the Year in 1969? (2)

1

2

12. How many of his 33 England games did Kieron Dyer play a full 90 minutes? How many goals did he score? (2)

1

2

13. Offside (2006) was a film about a young girl's efforts to get into the crowd and watch a World Cup qualifier in which country? (1)

1

14. What does the 'Bayern' part of Bayern Munich mean? How does it differ from the 'Bayer' in Bayer Leverkusen? (2)

1

2

15. Costa Rica, Mexico, Canada, Haiti, Japan, Spain, United States. Which two of these countries have never taken part in the Copa America as a guest nation? Which of the six reached the Final of the 1993 Copa America? (3)

1

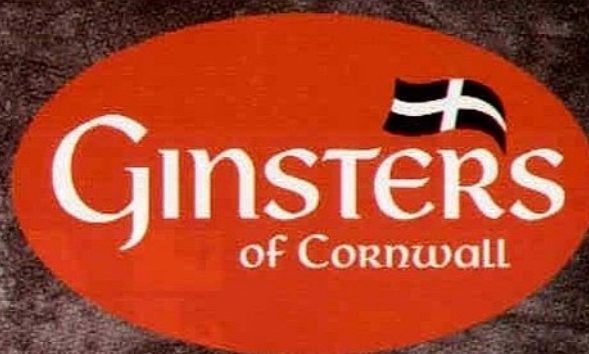
2

3

16. Wendy Toms was the first woman to do what? (1)

1





# Full Time



Proud partner of







# PASSING COMMENT

THE LAST TIME WE WENT TO LEYTON ORIENT THE LONDONERS WERE IN THE RELEGATION PLACES IN LEAGUE ONE AND STRUGGLING TO ESCAPE THE DROP.

We had beaten them convincingly at Vale Park earlier in the season and looked on course to do the double over them when 1-0 up at half time and looking comfortable. Things went a bit pear-shaped in the second half after Chris Neal was sent off and we lost 3-1. It wasn't enough to save Orient though and they were relegated to League Two at the end of the season. This was a dramatic turn around in the club's fortunes, bearing in mind they were on the verge of promotion to the Championship in the previous season and only failed to make it thanks to losing a penalty shoot out to Rotherham in the League One play-off final.

This steep decline coincided with the arrival of new Italian owner, Francesco Becchetti, who bought the club from Barry Hearn. Hearn had owned the club for the thick end of 20 years and had not always been popular with its fans because he ran a tight ship. Becchetti seems to have had a limited grasp of

how to run a lower league football club. Rumours circulated that certain players were on five figure weekly salaries at a club whose average attendance was on a par with Vale's. If true, it was complete madness. He seemed to be operating his own "Manager of the Month" competition as well - the club has had ten different managers during his two and a half seasons in charge.

Becchetti seems to have taken offence when a few fans demonstrated against the way he ran the club and has disappeared from the scene. The club is now facing a winding up petition from HMRC relating to an unpaid tax bill believed to be around £250,000. In response to the worsening financial and footballing situation, the fans set up LOFT, Leyton Orient Fans Trust. If the tax bill isn't paid they would seek the appointment of an administrator who would look to sell the club to new owners. The problem is, of course, that

such a course of action would lead to the club being deducted 12 points, virtually guaranteeing their relegation from the Football League. If they delay any administration until late March, the points deduction would be made next season and the club are likely to be relegated this year anyway in view of their current precarious position.

Vale fans will no doubt sympathise with the Orient faithful having been through the pain of administration on two occasions, the second of which probably cost us a chance at the play offs the year before we were promoted from League Two. Football clubs are written into a fan's DNA and those of you reading this will no doubt remember the pain which our past troubles caused. I can only hope that Orient find a solution to their problems, is passed into the hands of a competent new owner or owners and rebuild the club in the future.



# AIR WAVES

WITH BBC RADIO  
STOKE'S  
LEE BLAKEMAN



## A HUGE FEW WEEKS!

WELCOME TO VALE PARK FOR THE FIRST IN A SERIES OF HUGE GAMES FOR MICHAEL BROWN'S TEAM, AS THEY LOOK TO SECURE THEIR LEAGUE ONE STATUS FOR ANOTHER SEASON.

The players should come in to this afternoon's match at home to Swindon full of confidence, after what was a terrific point and performance last weekend at Southend. Every single player was terrific from start to finish whether they were going forward or helping out defensively. It was great to see Chris Eagles get his first for the club (with a rare header!!) and the travelling 190 Vale fans who made the trip to Roots Hall were a credit to Port Vale.

There have been times this season where fans have been questioned, whether it is for not turning up to some games or booing their team - but you really can't fault the diehard supporters who make the long away trips week in week out. The image of the supporters celebrating the goal at Southend was fantastic, you could see how much it meant to each and every one of them. The fans will have a huge part to play in the upcoming games - and I'm sure the attendances will be great, not

just on the road, but here at Vale Park as well.

The games coming up are huge! Swindon at home here this afternoon is, in my opinion, one of the biggest games the Vale have had since winning promotion back to League One in April 2013. Follow that up with a trip to struggling Northampton on Tuesday, Shrewsbury at home next Friday and bottom club Coventry away a week on Tuesday - it's a

defining 10 days for the football club.

Hopefully we'll see as many Vale fans at each game as possible, and if you can't make it then don't forget you can hear full commentary on each and every match with us on BBC Radio Stoke.

Enjoy this afternoon's game.  
Lee



**Sport at Six**

Monday to Friday  
from 6pm

Call: 01782 208008

Text: 81333 - start  
text with STOKES

Tweet: @bbcradiostoke

94.6FM 104.1FM DAB  
bbc.co.uk/stoke



# OPINIONATED



SIGNAL RADIO SPORT COMMENTATOR GEORGE ANDREWS GIVES US HIS THOUGHTS ON THE LATEST GOINGS ON IN THE WORLD OF FOOTBALL

signal19



IS THERE ANY EVIDENCE THAT CHILDREN AS YOUNG AS SIX, SEVEN AND EIGHT WHO HAVE JOINED A PROFESSIONAL FOOTBALL CLUB'S ACADEMY ARE BETTER PREPARED TO BE PROFESSIONAL FOOTBALLERS THAN THOSE LEFT TO PLAY WITH THEIR FRIENDS AND ENJOY ALL THE ACTIVITIES THAT CHILDREN NATURALLY DO?

Children just out of nappies are being enticed by football clubs to pre-academy sessions in order to start the cherry-picking process as early as possible. Is this good for our kids or is this really for the benefit of the big clubs?

We have to give the power back to the people who play football, the next generation of people to play the game, who are the future of this country. They haven't got a voice, nor have their parents. In a recent survey, when asked what they want for their children, the vast majority of parents want them to be happy. We have to act in the best interests of football.

MPs passed a vote of no confidence in the FA. They have been banging on about improving the game at grass roots level and introducing greater scrutiny of the clubs, recommending more representation at the FA for fans and the grassroots game. In addition, they want more diversity in positions of authority. They also want to dilute the perceived dominance of the Premier League. Football used to be a simple game when experienced scouts would recommend players to the managers of football clubs. They would tell them what their attributes were and if they were going to

make the grade as professional footballers. These days, however, clubs have become obsessed with Directors of Football and a supporting cast to rival Ben Hur when it's not necessary. We want to hear about people's concern regarding young players and the governing body's ability to reform. They should seek to help the next generation of young players' journey through the academy of football system.

Keep the Faith  
The Georgie Boy  
Signal Radio Sport





STAFFORDSHIRE  
UNIVERSITY

Be like your  
**Sporting  
Heroes**

**FOLLOW IN THEIR FOOTSTEPS AND TAKE A UNIVERSITY QUALIFICATION**

Staffordshire University – Port Vale FC's Education and Learning Partner



BIOMECHANICS  
SPORTS JOURNALISM  
SPORTS STUDIES

SPORTS DEVELOPMENT AND COACHING  
SPORTS AND EXERCISE SCIENCE  
SPORT AND EXERCISE PSYCHOLOGY

For further information visit [www.staffs.ac.uk](http://www.staffs.ac.uk)  
or call our enquiries team on 01782 294400





ALL THE LATEST SUPPORTERS CLUB NEWS WITH JOHN KING

# SUPPORTERS' CLUB

GOOD AFTERNOON EVERYBODY, AND WELCOME TO VALE PARK FOR THIS AFTERNOON'S MATCH AGAINST THE ROBINS. IT'S GETTING TO THE BUSINESS END OF THE SEASON AND THIS HAS BEEN STATED AS A "MUST WIN" GAME FOR BOTH SIDES.

I would like to give a warm welcome to the fans, players and staff of Swindon Town. I'm sure spirits were high at Swindon, after consecutive 3-1 wins against Coventry & Gillingham, which had given them hope of pulling away from the relegation zone, but who arrive on the back of a 1-0 defeat at home to Chesterfield, described by the manager as "a sickener", with the winning goal coming in the dying seconds.

I would also like to welcome Chris Morgan to his first home game at Vale Park, as he gets to grips with his new role with the coaching staff.

The performance at Roots Hall was particularly pleasing, and the fact that a team vying for the play off places were grateful for a point shows how things have improved over recent weeks. Just as the performance will help to build confidence in the team, Chris Eagles' first goal for the Vale will boost his confidence, and I'm sure there's better to come as his confidence and fitness improves.

It was good to see another Vale youth team player, Billy Reeves, coming through the ranks and

making a solid performance on his debut. Who knows how valuable his efforts could be over the coming weeks, especially given the increasing number of injuries and the inevitable suspensions.

Whilst we have 3 games in hand on most of the teams around us, I'm sure we would rather have the points on the board, but the improving performances by the Vale give increased hope that we can beat the drop.

All the matches in the run up to the end of the season will be important, but there are a number of matches against teams that are in and around us, so it's important we make the most of these opportunities.

Whilst there is plenty of talk off the pitch, regarding potential buyers, it's results on the pitch that will determine where we will be playing next season, and it is therefore important that come 3 o'clock, we put the situation off the pitch behind us and get united behind the team. I'm sure that Michael Brown will also be telling the players to leave any speculation behind the touchline when they take to the

## SUPPORTERS' CLUB NEWS

### DISCRIMINATORY ABUSE IS UNACCEPTABLE

I would also like to remind you all, that any kind of discriminatory abuse is unacceptable and will not be tolerated at Vale Park. We work very closely with the club, the police and kick it out and would urge anyone who witnesses any discriminatory behaviour, of any kind, to contact your nearest steward, to allow them to deal with it quickly and efficiently.

**PORT VALE FOOTBALL CLUB WORKING IN PARTNERSHIP WITH:**



**KICK IT OUT**

### GETTING IN TOUCH

Please visit our website [www.portvalesupportersclub.org](http://www.portvalesupportersclub.org) or follow us on Twitter @ValeSupporters for more information. We are also on Facebook, search for Port Vale Supporters Club or email me at [ally.portvale.sc@gmail.com](mailto:ally.portvale.sc@gmail.com)

pitch, but our support will be crucial in building their confidence & giving them a lift, so let's make a noise & let them know we're behind them!

Keep the faith, we are Vale, we can do this!

Keep the faith, we are Vale  
John King

Supporters' Club Secretary

[www.portvalesupportersclub.org](http://www.portvalesupportersclub.org) | [ally.portvale.sc@gmail.com](mailto:ally.portvale.sc@gmail.com)



# RESERVES

LATEST NEWS FROM THE PORT VALE RESERVES



## CENTRAL LEAGUE WEST DIVISION FIXTURES 2016/17

### SEPTEMBER 2016

|        |                    |      |
|--------|--------------------|------|
| Tue 6  | Walsall            | W2-0 |
| Tue 20 | MORECAMBE (CL Cup) | W3-1 |
| Wed 28 | BURTON ALBION      | W2-1 |

### OCTOBER 2016

|        |                    |      |
|--------|--------------------|------|
| Wed 12 | MORECAMBE          | W3-2 |
| Wed 19 | Bilston T (SSC)    | L1-3 |
| Tue 25 | Fleetwood (CL Cup) | L1-3 |

### NOVEMBER 2016

|        |                    |      |
|--------|--------------------|------|
| Tue 8  | Wrexham            | D2-2 |
| Wed 23 | Wigan Ath (CL Cup) | L2-3 |

### JANUARY 2017

|        |               |      |
|--------|---------------|------|
| Tue 10 | Bradford City | W4-0 |
| Wed 25 | WREXHAM       | W6-0 |

### FEBRUARY 2017

|        |           |      |
|--------|-----------|------|
| Wed 15 | Morecambe | L0-2 |
|--------|-----------|------|

### MARCH 2017

|        |               |      |
|--------|---------------|------|
| Wed 1  | BRADFORD CITY | L0-2 |
| Wed 8  | WALSALL       | D2-2 |
| Wed 15 | Burton Albion | 1px1 |



## CENTRAL LEAGUE WEST DIVISION 2016/17

|                  | P        | W        | D        | L        | F         | A        | Pts       |
|------------------|----------|----------|----------|----------|-----------|----------|-----------|
| Walsall          | 9        | 8        | 0        | 1        | 17        | 4        | 24        |
| <b>PORT VALE</b> | <b>8</b> | <b>5</b> | <b>1</b> | <b>2</b> | <b>19</b> | <b>9</b> | <b>16</b> |
| Burton A         | 8        | 4        | 1        | 3        | 17        | 7        | 13        |
| Bradford C       | 6        | 2        | 0        | 4        | 4         | 13       | 6         |
| Morecambe        | 8        | 2        | 0        | 6        | 6         | 16       | 6         |
| Wrexham          | 9        | 1        | 2        | 6        | 9         | 23       | 5         |

League Table as at 7th March 2017

## FINAL CENTRAL LEAGUE CUP TABLE 2016/17

|                  | P        | W        | D        | L        | F        | A        | Pts      |
|------------------|----------|----------|----------|----------|----------|----------|----------|
| Fleetwood        | 3        | 3        | 0        | 0        | 7        | 1        | 9        |
| Wigan Athletic   | 3        | 2        | 0        | 1        | 10       | 4        | 6        |
| <b>PORT VALE</b> | <b>3</b> | <b>1</b> | <b>0</b> | <b>2</b> | <b>6</b> | <b>7</b> | <b>3</b> |
| Morecambe        | 3        | 0        | 0        | 3        | 1        | 12       | 0        |

PORT VALE RESERVES

## VALE'S TITLE HOPES ENDED BY BANTAMS



## PORT VALE 0 BRADFORD CITY 2

WEDNESDAY 1ST MARCH 2017  
CENTRAL LEAGUE WESTERN DIVISION

VALE'S TITLE HOPES DISAPPEARED AFTER THEIR SECOND DEFEAT OF THE SEASON. GOALKEEPER DENIZ MEHMET MADE HIS DEBUT AND WAS TESTED IN THE FIRST MINUTE AS THE BALL DIVERTED OFF LUKE DENNIS AND HE TIPPED IT OVER THE BAR

Sam Kelly had a shot parried by Joe Cracknell but then Mehmet was in action, tipping over from Danny Devine.

Axel Prohoully had a free kick tipped over but Vale fell behind on the stroke of half time. Matt Penney hit a low shot from the by-line which deflected off Ville Moilanen and into the net although Mehmet did get a hand to it.

After the break Mehmet made a good save from a Curtis Peters shot. Vale hit back when Dan Turner turned and had a shot saved by Cracknell.

Moilanen shot wide as Bradford pressed and they were awarded a penalty in the 71st minute when Paulo Tavares, playing as a central defender, brought down Andreas

Komodikis. Ellis Hudson duly scored the spot kick. The result means that Walsall are the champions.

**VALE TEAM:** Mehmet, Gibbons (Fraser 61), Tavares, Dennis, Tanser (Shalaj 53), Prohoully, Lawton, Amoros (Calverley 86), Shodipo (Pereira 71), Kelly, Turner

**SUB NOT USED:** Pickering





# TEENAGE KICKS



LATEST NEWS FROM THE ACADEMY AND YOUTH TEAMS

## RESERVES: THE NEXT GAME: BURTON ALBION



The next away game is against Burton Albion on Wednesday 15th March 2017 at 1pm at the St George's Park.

## YOUTH: THE NEXT HOME GAME: ROCHDALE



The next home game is against Rochdale on Wednesday 22nd March 2017 at the Bycarrs Training Ground at 1pm.

## PORT VALE YOUTH



## NORTH WEST YOUTH ALLIANCE NORTH WEST LEAGUE TABLE 2016/17

|                  | P         | W         | D        | L        | F         | A         | Pts       |
|------------------|-----------|-----------|----------|----------|-----------|-----------|-----------|
| Blackpool        | 21        | 13        | 5        | 3        | 55        | 21        | 44        |
| Walsall          | 18        | 11        | 4        | 3        | 30        | 16        | 37        |
| <b>PORT VALE</b> | <b>20</b> | <b>10</b> | <b>5</b> | <b>5</b> | <b>33</b> | <b>27</b> | <b>35</b> |
| Shrewsbury T     | 22        | 8         | 8        | 6        | 36        | 34        | 32        |
| Rochdale         | 16        | 9         | 4        | 3        | 30        | 15        | 31        |
| Burnley          | 17        | 9         | 4        | 4        | 30        | 22        | 31        |
| Bury             | 19        | 10        | 1        | 8        | 31        | 33        | 31        |
| Wigan A          | 21        | 7         | 7        | 7        | 38        | 33        | 28        |
| Accrington S     | 17        | 7         | 4        | 6        | 22        | 27        | 25        |
| Morecambe        | 19        | 6         | 3        | 10       | 30        | 35        | 21        |
| Preston NE       | 21        | 3         | 11       | 7        | 31        | 39        | 20        |
| Fleetwood T      | 19        | 5         | 5        | 9        | 35        | 45        | 20        |
| Tranmere R       | 21        | 3         | 7        | 11       | 14        | 28        | 16        |
| Carlisle U       | 19        | 4         | 1        | 14       | 22        | 41        | 13        |
| Wrexham          | 20        | 2         | 7        | 11       | 25        | 46        | 13        |

League Table as at 4th March 2017



## YOUTH: YOUTH ALLIANCE LEAGUE NORTH WEST FIXTURES 2016/17

### AUGUST 2016

|        |                        |      |
|--------|------------------------|------|
| Sat 6  | Tranmere Rovers (A)    | W3-1 |
| Sat 13 | WIGAN ATHLETIC (H)     | W2-0 |
| Sat 20 | ACCRINGTON STANLEY (H) | L0-1 |
| Sat 27 | WREXHAM (H) EFL YA Cup | D1-1 |

### SEPTEMBER 2016

|        |                             |      |
|--------|-----------------------------|------|
| Sat 3  | MORECAMBE (H)               | W3-2 |
| Sat 10 | NOTTS COUNTY (H) EFL YA CUP | W2-0 |
| Sat 17 | Preston North End (A)       | W2-1 |
| Sat 24 | WALSALL (H)                 | L0-1 |

### OCTOBER 2016

|        |                             |      |
|--------|-----------------------------|------|
| Sat 1  | Rochdale (A)                | W2-1 |
| Sat 8  | SHREWSBURY TOWN (H)         | D2-2 |
| Sat 15 | Swindon Town (A)            | L1-2 |
| Fri 21 | Chesterfield (A) EFL YA Cup | W3-0 |
| Thu 27 | Peterborough (A) EFL YA Cup | L0-2 |

### NOVEMBER 2016

|        |                                      |      |
|--------|--------------------------------------|------|
| Sat 5  | Wigan Athletic                       | L1-3 |
| Sat 12 | HARTLEPOOL UNITED EFL YA Cup Area QF | L0-1 |
| Sat 19 | Wrexham (A)                          | L3-3 |
| Sat 26 |                                      |      |

### DECEMBER 2016

|        |                     |      |
|--------|---------------------|------|
| Sat 3  | FLEETWOOD TOWN (H)  | W2-0 |
| Sat 10 | Carlisle United (A) | W2-1 |
| Sat 17 | BURNLEY (H)         | D1-1 |

### JANUARY 2017

|        |                     |      |
|--------|---------------------|------|
| Sat 14 | Walsall (A)         | W3-2 |
| Sat 21 | SWINDON TOWN (H)    | W2-0 |
| Sat 28 | Shrewsbury Town (A) | D1-1 |

### FEBRUARY 2017

|        |                    |      |
|--------|--------------------|------|
| Sat 4  | PRESTON NE         | L0-3 |
| Sat 11 |                    |      |
| Sat 18 | BLACKPOOL (H)      | D1-1 |
| Sat 25 | Fleetwood Town (A) | P-P  |

### MARCH 2017

|        |                     |      |
|--------|---------------------|------|
| Sat 4  | WREXHAM (H)         | W2-1 |
| Sat 11 | CARLISLE UNITED (H) | Noon |
| Wed 18 | Blackpool (A)       | 11am |
| Wed 22 | ROCHDALE (H)        | 1pm  |
| Sat 25 | Burnley (A)         | 11am |

### APRIL 2017

|        |                        |      |
|--------|------------------------|------|
| Sat 1  | TRANMERE ROVERS (H)    | 11am |
| Sat 15 |                        |      |
| Sat 22 | Accrington Stanley (A) | 11am |
| Sat 29 | Morecambe (A)          | 11am |

**KICK IT OUT**  
TACKLING RACISM & DISCRIMINATION

KICKITOUT.ORG

## HANDS ON REPORTING!

THE NEW, FREE KICK IT OUT APP ALLOWS YOU TO REPORT ALL INSTANCES OF DISCRIMINATION ACROSS EVERY LEVEL OF THE GAME

- ATTACH PHOTOS AND VIDEO TO REPORTS
- REPORT SOCIAL MEDIA ABUSE
- REPORT CONFIDENTIALLY



DOWNLOAD  
THE NEW  
APP TODAY



FACEBOOK/KICKITOUTOFFICIAL



@KICKITOUT



INFO@KICKITOUT.ORG



0800 165 54 14



@KICKITOUT



GOING PLACES WITH JOAN STANLEY...

# SIXFIELDS STADIUM



**GROUND NAME:**

Sixfields

**CAPACITY:** 7,653 (all seated)

**ADDRESS:**

Sixfields Stadium, Northampton, NN5 5QA

**MAIN TEL NO:**

0870 5321947

**TEAM NICKNAME:**

The Cobblers

**OFFICIAL WEBSITE:**

[www.nf.co.uk](http://www.nf.co.uk)

## NORTHAMPTON v PORT VALE

TUESDAY 14TH MARCH 2017 | 19:45

SIXFIELDS STADIUM | EFL SKY BET LEAGUE ONE



### TICKET INFORMATION:

#### IN ADVANCE

On sale up to 5pm 13th March

Adult (21-65): £22.00

Senior: £18.00

18-20: £18.00

7-17: £10.00

Under 7: FREE

#### PAY ON THE DAY (CASH ONLY)

Adult (21-65): £24.00

Senior: £20.00

18-20: £20.00

7-17: £12.00

Under 7: FREE

### COACH TRAVEL INFORMATION:

Departure Time: 4.00pm

Adults: £14.00

Concessions: £12.50

### DIRECTIONS:

Sat Nav: NNS 5QA

Distance: 98.3 miles

Travel Time: 1h 51min

Take M6 South to the junction with M1, then M1 South to Junction 16 (s/p Northampton A45) and take the dual carriageway for 3.4 miles. Turn right at the roundabout by the MGM cinema (s/p Ring Road, M1 South, A45) and then left at the next roundabout into Sixfields.

### THE STADIUM:

Opened in 1994, Sixfields is a neat little ground on the outskirts of Northampton giving easy access for visiting fans. A hilltop behind the stadium offers a limited view of the playing area for those individuals who gather there hoping to get their football for free.

The West Stand holds over half of the ground's capacity with seating for 4,000 home fans. The other three stands are very small in comparison with the Dave Bowen Stand and the South Stand identical in appearance housing under 1,000 spectators each. The Alwyn Hargrave Stand, opposite the West Stand, holds about 1,000 supporters.

### WHERE THE VALIANTS WILL SIT:

The Vale will be allocated the 850 seater South Stand which is behind the goal - a further 423 seats available in the Alwyn Stand if required. One point to note - supporters with long

legs avoid the back row as space is severely restricted!

### PLACES TO EAT:

Sixfields is situated on a leisure complex with fast food outlets, not the traditional chippies but very convenient, especially after parking!

### PLACES TO DRINK:

Just like the fast food outlets two pubs are found on the complex. The Magic Tower is for home supporters only and the other, the Sixfields Tavern, does not allow away colours to be shown. However there are many bars on the leisure complex for supporters who fancy a pint in different surroundings.





# RICOH ARENA

## COVENTRY CITY v PORT VALE

TUESDAY 21ST MARCH 2017 | 19:45

RICOH ARENA | EFL SKY BET LEAGUE ONE



**GROUND NAME:**

Ricoch Arena

**CAPACITY:** 25,500 (all seated)

**ADDRESS:**

Phoenix Way, Foleshill,  
Coventry, CV6 6CF

**MAIN TEL NO:** 02474 873 1883

**TICKET OFFICE NO:**

0814 873 1883 (Option 1)

**TEAM NICKNAME:**

The Sky Blues

**OFFICIAL WEBSITE:**

[www.cfc.co.uk](http://www.cfc.co.uk)

### TICKET INFORMATION:

|              |        |
|--------------|--------|
| Adult:       | £22.00 |
| 60+:         | £15.00 |
| 18-21 years: | £15.00 |
| 0-17 years:  | £10.00 |

NO INCREASE ON DAY  
OFF SALE 5PM MONDAY 20TH  
MARCH

### COACH TRAVEL INFORMATION:

|                 |        |
|-----------------|--------|
| Departure Time: | 5.00pm |
| Adults:         | £14.00 |
| Concessions:    | £12.50 |

### DIRECTIONS:

|              |            |
|--------------|------------|
| Sat Nav:     | CV6 6GE    |
| Distance:    | 65.5 miles |
| Travel Time: | 1h 10min   |

Take the M8 south. Leave at junction 3.  
Take the A444 towards the city centre  
and after one mile you will reach the  
stadium on the left.



### WHERE TO PARK:

Mostly parking is for permit holders,  
with some spaces in Car Park C at  
£10 per car. It is advisable to book a  
space in advance. Other car parks  
within walking distance of the stadium,  
in such places as factory units and local  
schools are available. The cost of these  
official car parks vary but are around

£2.50-£5 per vehicle. In addition  
an extensive residents only parking  
scheme has been put in place for all  
residential streets within a least a mile of  
the ground.

### THE STADIUM:

Three sides of the stadium are  
large single tiered stands. The  
Lloydspharmacy Stand, has a small tier  
of seats over the larger lower tier, with  
a row of corporate hospitality boxes,  
along the back of the lower section. An  
exhibition centre is behind this stand. In  
one of the corners is located a Police  
Control box. The stadium is completely  
enclosed, all corners having seating.  
All the stands are of the same height,  
giving it a symmetrical look. More  
natural light enters the stadium by the  
Perspex panels, built into the roof of the  
South Stand, which helps the growth  
of the grass pitch. There is a large video  
screen type scoreboard located in  
one corner of the stadium between  
the South and Tesco East Stands. The  
stadium was opened in August 2005.

### WHERE THE VALIANTS WILL BE SEATED:

Away supporters are mostly allocated  
one side of the South Stand (Blocks  
6 & 7). Around 3,000 supporters can  
be seated in this area. The rake of the  
stand is quite steep so it is quite a climb  
to the back! The stadium does have  
good acoustics, which helps boost the  
atmosphere.

Entrance to the stadium is through  
automatic turnstiles, where you have to

put your ticket (which has a bar code  
on it) into a slot reader, which then  
allows the turnstiles to admit you.

### PLACES TO EAT:

The usual fare is on offer in the  
spacious concourse with hot dogs,  
meat and potato, chicken and  
mushroom and cheese and onion  
pies, all about £3.50. As well as large  
sausage rolls. Outside the arena food  
is available in the café in the Tesco  
Extra. Coming from the arena by  
the North Stand follow the tow path  
over the canal for about 400 yards.  
If you continue when you come  
to Longford Road head straight  
towards the City Centre and 200  
yards along is the JK English pub/  
Indian restaurant which does an all  
you can eat buffet on a Saturday  
lunchtime.

### PLACES TO DRINK:

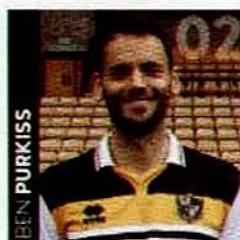
As well as the JK English pub in  
Longford Road other pubs include  
the Longford Engine and Coach and  
Horses both which welcome away  
fans. To reach these cross the canal  
and take the path through the small  
park until you come to Longford Road  
turn left away from the City Centre.  
They are about 15 minutes walk from  
the ground. In one corner of the  
stadium, near the Club Shop is the  
Grovesnor Casino which is open to  
both home and away fans and Vale  
fans were full of praise for this when  
we visited last season.





# 2016/17 PLAYER

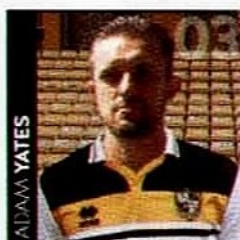
**SPONSOR YOUR FAVOURITE PLAYER** - This whole package is only **£350**



**BEN PURKISS**

**SPONSORED BY**  
**mclub**  
\*\*\*\*\* SPA AND FITNESS

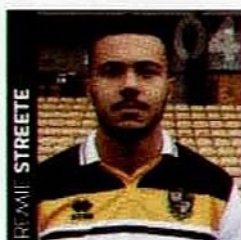
**BOOTLACE**  
Available for Sponsorship  
**SHINPAD**  
Available for Sponsorship



**ADAM YATES**

**SPONSORED BY**  
**AVAILABLE FOR SPONSORSHIP**

**BOOTLACE**  
Available for Sponsorship  
**SHINPAD**  
Available for Sponsorship

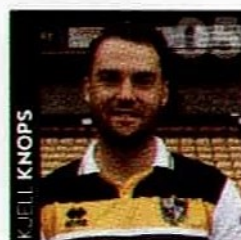


**REECE STREETE**

**SPONSORED BY**



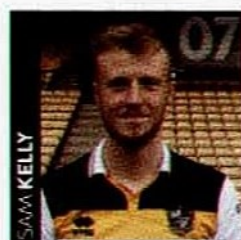
**BOOTLACE**  
Available for Sponsorship  
**SHINPAD**  
Available for Sponsorship



**KUJELL KNOPS**

**SPONSORED BY**  
**mclub**  
\*\*\*\*\* SPA AND FITNESS

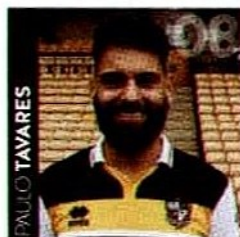
**BOOTLACE**  
Available for Sponsorship  
**SHINPAD**  
Available for Sponsorship



**SAM KELLY**

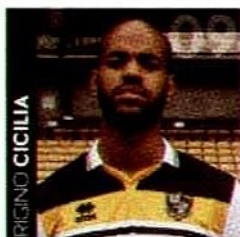
**SPONSORED BY**  
**km**  
Kelly Motors & Co Limited  
Insurance, MOT, Servicing

**BOOTLACE**  
Available for Freddie Beckett  
**SHINPAD**  
Available for Sponsorship



**PAULO TAVARES**

**SPONSORED BY**  
**BOOTLACE**  
Available for Sponsorship  
**SHINPAD**  
Available for Sponsorship

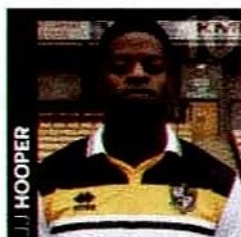


**RICINO CICILIA**

**SPONSORED BY**



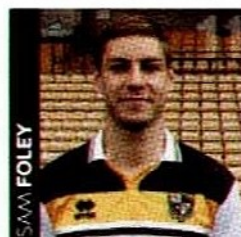
**BOOTLACE**  
Available for Sponsorship  
**SHINPAD**  
Available for Sponsorship



**JJ HOOPER**

**SPONSORED BY**  
**AVAILABLE FOR SPONSORSHIP**

**BOOTLACE**  
Available for Sponsorship  
**SHINPAD**  
Available for Sponsorship

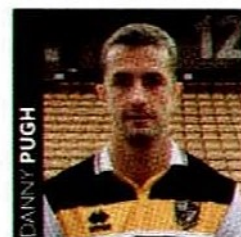


**SAM FOLEY**

**SPONSORED BY**



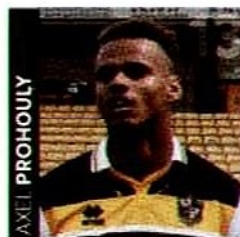
**BOOTLACE**  
Huey & Lois Walklett  
**SHINPAD**  
Available for Sponsorship



**DANNY PUGH**

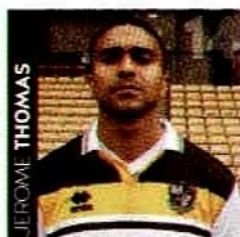
**SPONSORED BY**  
**AVAILABLE FOR SPONSORSHIP**

**BOOTLACE**  
Available for Sponsorship  
**SHINPAD**  
Available for Sponsorship



**AXEL PROHOULLY**

**SPONSORED BY**  
**AVAILABLE FOR SPONSORSHIP**  
**BOOTLACE**  
Available for Sponsorship  
**SHINPAD**  
Available for Sponsorship



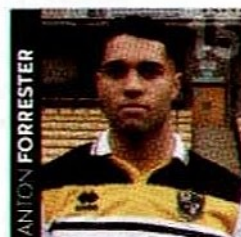
**JEROME THOMAS**

**SPONSORED BY**



Kelly Motors & Co Limited  
Insurance, MOT, Servicing

**BOOTLACE**  
Available for Sponsorship  
**SHINPAD**  
Available for Sponsorship

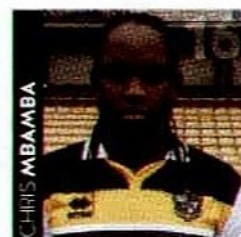


**ANTON FORRESTER**

**SPONSORED BY**



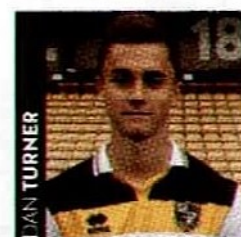
**BOOTLACE**  
Harry Cotton  
**SHINPAD**  
Available for Sponsorship



**CHRIS MBAMBA**

**SPONSORED BY**  
**AVAILABLE FOR SPONSORSHIP**

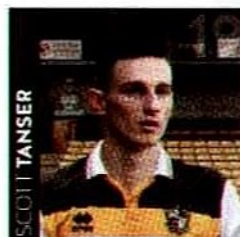
**BOOTLACE**  
Ramona Silfver  
**SHINPAD**  
Available for Sponsorship



**IAN TURNER**

**SPONSORED BY**  
**AVAILABLE FOR SPONSORSHIP**

**BOOTLACE**  
Available for Sponsorship  
**SHINPAD**  
Available for Sponsorship



**SCOTT TANSER**

**SPONSORED BY**  
**AVAILABLE FOR SPONSORSHIP**  
**BOOTLACE**  
Available for Sponsorship  
**SHINPAD**  
Available for Sponsorship



**KIKO**

**SPONSORED BY**



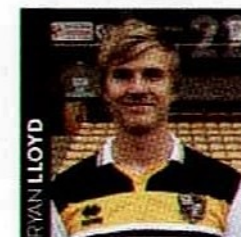
**BOOTLACE**  
Available for Sponsorship  
**SHINPAD**  
Available for Sponsorship



**QUENTIN PEREIRA**

**SPONSORED BY**  
**AVAILABLE FOR SPONSORSHIP**

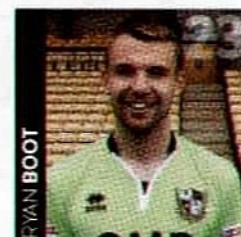
**BOOTLACE**  
Available for Sponsorship  
**SHINPAD**  
Available for Sponsorship



**RYAN LLOYD**

**SPONSORED BY**  
**AVAILABLE FOR SPONSORSHIP**

**BOOTLACE**  
Available for Sponsorship  
**SHINPAD**  
Available for Sponsorship



**RYAN BOOT**

**SPONSORED BY**  
**AVAILABLE FOR SPONSORSHIP**

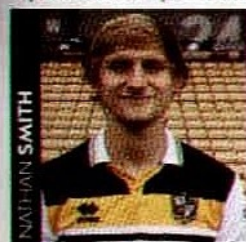
**BOOTLACE**  
Available for Sponsorship  
**SHINPAD**  
Available for Sponsorship



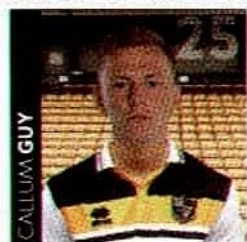
# SPONSORSHIP

email: [commercial@port-vale.co.uk](mailto:commercial@port-vale.co.uk) or call the team on **01782 655823**.

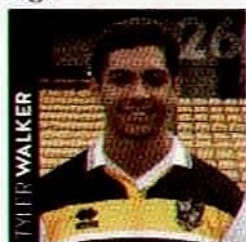
Sponsorship details at the bottom of this page



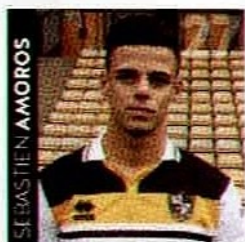
**NATHAN SMITH**  
SPONSORED BY  
R&H  
INSULATIONS LTD  
BOOTLACE  
ISABELLE ABBOTTS  
SHINPAD  
JOSH SARGEANT



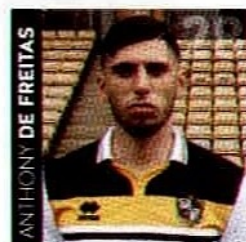
**CALLUM GUY**  
SPONSORED BY  
AVAILABLE FOR  
SPONSORSHIP  
BOOTLACE  
Available for Sponsorship  
SHINPAD  
Available for Sponsorship



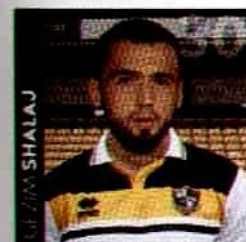
**PETER WALKER**  
SPONSORED BY  
AVAILABLE FOR  
SPONSORSHIP  
BOOTLACE  
Available for Sponsorship  
SHINPAD  
Available for Sponsorship



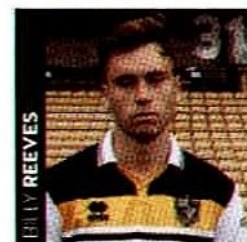
**SEBASTIAN AMOROS**  
SPONSORED  
BY **KMF**  
BOOTLACE  
Available for Sponsorship  
SHINPAD  
ISABELLA GIBBS



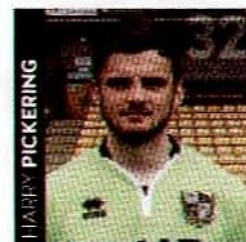
**ANTHONY DE FREITAS**  
SPONSORED  
BY **DD**  
BOOTLACE  
Available for Sponsorship  
SHINPAD  
Available for Sponsorship



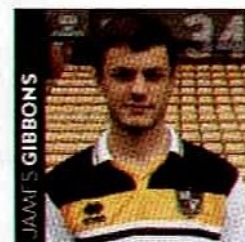
**ZAK SHALAJ**  
SPONSORED BY  
AVAILABLE FOR  
SPONSORSHIP  
BOOTLACE  
Available for Sponsorship  
SHINPAD  
Available for Sponsorship



**BILLY REEVES**  
SPONSORED BY  
AVAILABLE FOR  
SPONSORSHIP  
BOOTLACE  
Available for Sponsorship  
SHINPAD  
Available for Sponsorship



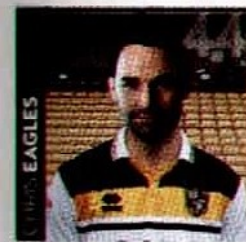
**HARRY PICKERING**  
SPONSORED BY  
AVAILABLE FOR  
SPONSORSHIP  
BOOTLACE  
Available for Sponsorship  
SHINPAD  
Available for Sponsorship



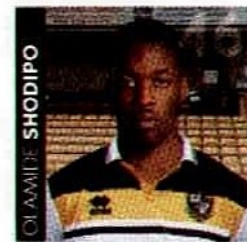
**JAMES GIBBONS**  
SPONSORED BY  
AVAILABLE FOR  
SPONSORSHIP  
BOOTLACE  
Available for Sponsorship  
SHINPAD  
Available for Sponsorship



**LEONARDO FASAN**  
SPONSORED BY  
AVAILABLE FOR  
SPONSORSHIP  
BOOTLACE  
Available for Sponsorship  
SHINPAD  
Available for Sponsorship



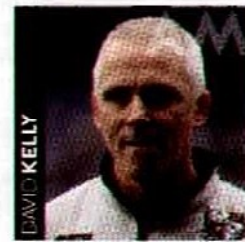
**CHRIS EAGLES**  
SPONSORED BY  
AVAILABLE FOR  
SPONSORSHIP  
BOOTLACE  
Available for Sponsorship  
SHINPAD  
Available for Sponsorship



**OLAMIDE SHODIPO**  
SPONSORED BY  
AVAILABLE FOR  
SPONSORSHIP  
BOOTLACE  
Available for Sponsorship  
SHINPAD  
Available for Sponsorship



**MICHAEL BROWN**  
SPONSORED BY  
TONY  
FRADLEY  
BOOTLACE  
Available for Sponsorship  
SHINPAD  
Available for Sponsorship



**DAVID KELLY**  
SPONSORED BY  
AVAILABLE FOR  
SPONSORSHIP  
BOOTLACE  
Available for Sponsorship  
SHINPAD  
Available for Sponsorship



**BOOMER**  
SPONSORED BY  
AVAILABLE FOR  
SPONSORSHIP  
BOOTLACE  
Available for Sponsorship  
SHINPAD  
Available for Sponsorship

## WANT TO SPONSOR A VALE PLAYER?

### PLAYER SPONSORSHIP

This whole package is only **£350**

Call the team on **01782 655808** or email [commercial@port-vale.co.uk](mailto:commercial@port-vale.co.uk)

### PLAYERS' BOOTLACE & SHINPAD

Players' Bootlace and Shinpad sponsorship is available for just **£30** and allows you the opportunity to meet the player for a photograph.

To secure sponsorship or for more information, contact Joan Stanley on **01782 655838** or email [joan.stanley@port-vale.co.uk](mailto:joan.stanley@port-vale.co.uk)

[www.port-vale.co.uk](http://www.port-vale.co.uk)





# FIXTURES & RESULTS

sky BET LEAGUE ONE EFL

## LEAGUE ONE TABLE 2016/17

|                  | P  | W  | D  | L  | F  | A  | GD  | Pts |
|------------------|----|----|----|----|----|----|-----|-----|
| 1 Sheffield Utd  | 36 | 21 | 9  | 6  | 67 | 40 | 27  | 72  |
| 2 Fleetwood      | 35 | 18 | 10 | 7  | 52 | 32 | 20  | 64  |
| 3 Scunthorpe     | 36 | 17 | 10 | 9  | 61 | 40 | 21  | 61  |
| 4 Bolton         | 34 | 17 | 9  | 8  | 46 | 29 | 17  | 60  |
| 5 Bradford City  | 36 | 14 | 17 | 5  | 47 | 34 | 13  | 59  |
| 6 Millwall       | 35 | 16 | 10 | 9  | 50 | 41 | 9   | 58  |
| 7 Southend       | 35 | 14 | 12 | 9  | 53 | 43 | 10  | 54  |
| 8 Walsall        | 36 | 13 | 13 | 10 | 44 | 44 | 0   | 52  |
| 9 Bristol Rovers | 36 | 13 | 12 | 11 | 54 | 54 | 0   | 51  |
| 10 Peterborough  | 36 | 14 | 8  | 14 | 49 | 48 | 1   | 50  |
| 11 Oxford        | 34 | 14 | 7  | 13 | 44 | 38 | 6   | 49  |
| 12 Rochdale      | 33 | 14 | 7  | 12 | 48 | 46 | 2   | 49  |
| 13 Wimbledon     | 35 | 11 | 14 | 10 | 47 | 45 | 2   | 47  |
| 14 Charlton      | 36 | 10 | 15 | 11 | 46 | 42 | 4   | 45  |
| 15 MK Dons       | 35 | 11 | 10 | 14 | 45 | 45 | 0   | 43  |
| 16 Northampton   | 36 | 12 | 7  | 17 | 53 | 60 | -7  | 43  |
| 17 Gillingham    | 36 | 10 | 12 | 14 | 47 | 57 | -10 | 42  |
| 18 Shrewsbury    | 36 | 11 | 9  | 16 | 39 | 50 | -11 | 42  |
| 19 Bury          | 36 | 11 | 7  | 18 | 54 | 64 | -10 | 40  |
| 20 Oldham        | 36 | 9  | 12 | 15 | 23 | 36 | -13 | 39  |
| 21 SWINDON       | 36 | 9  | 9  | 18 | 35 | 50 | -15 | 36  |
| 22 PORT VALE     | 33 | 8  | 11 | 14 | 35 | 52 | -17 | 35  |
| 23 Chesterfield  | 36 | 8  | 7  | 21 | 32 | 57 | -25 | 31  |
| 24 Coventry City | 35 | 5  | 11 | 19 | 30 | 54 | -24 | 26  |

sky BET LEAGUE ONE EFL

## TODAY'S FIXTURES

|                |   |               |     |
|----------------|---|---------------|-----|
| Wimbledon      | v | Northampton   | 3pm |
| Bristol Rovers | v | Southend      | 3pm |
| Charlton       | v | Walsall       | 3pm |
| Chesterfield   | v | Shrewsbury    | 3pm |
| Coventry City  | v | Bradford City | 3pm |
| Fleetwood      | v | Bolton        | 3pm |
| Gillingham     | v | Scunthorpe    | 3pm |
| MK Dons        | v | Rochdale      | 3pm |
| Oldham         | v | Bury          | 3pm |
| Peterborough   | v | Oxford        | 3pm |
| Port Vale      | v | Swindon Town  | 3pm |
| Sheffield Utd  | v | Bolton        | 3pm |

## VALE PARK EMERGENCY PROCEDURE

In the event of an emergency at Vale Park you will hear a message over the public address system providing information and directions to spectators. We ask all spectators to remain where they are and to listen very carefully to the message. If it affects your area, please comply with the instructions immediately. The Stewards, Police Officers and Officials will direct you to safe areas which may be through exit doors/gates or on to the playing area. If you are disabled or feel unsafe in a large crowd, remain where you are until stewards assist you. Please respond quickly but calmly to ensure a safe evacuation of the stadium.

| DATE                 | OPPOSITION             | RES | ATT   | AWAY POS | GOALS | GOALS | GOALS                 |
|----------------------|------------------------|-----|-------|----------|-------|-------|-----------------------|
| <b>AUGUST 2016</b>   |                        |     |       |          |       |       |                       |
| SAT 6                | BRADFORD CITY          | A   | D0-0  | 18,558   | 1,073 | 15    | ALNWICK KNOPS SMITH   |
| TUE 9                | CARLISLE UNITED (LC1)  | A   | L1-2  | 3,363    | 225   | -     | ALNWICK KNOPS SMITH   |
| SAT 13               | SOUTHEND UNITED        | H   | W2-0  | 4,727    | 254   | 7     | ALNWICK KNOPS SMITH   |
| TUE 16               | ROCHDALE               | H   | W1-0  | 3,941    | 175   | 4     | ALNWICK KNOPS SMITH   |
| SAT 20               | SWINDON TOWN           | A   | L0-1  | 6,182    | 309   | 6     | ALNWICK KNOPS SMITH   |
| SAT 27               | SCUNTHORPE UNITED      | H   | W3-1  | 4,557    | 373   | 4     | ALNWICK KNOPS SMITH   |
| TUE 30               | DERBY COUNTY (CT)      | H   | W1-0  | 1,198    | 120   | -     | ALNWICK KFD SMITH     |
| <b>SEPTEMBER</b>     |                        |     |       |          |       |       |                       |
| SAT 3                | BURY                   | A   | L1-4  | 4,042    | 1,298 | 7     | ALNWICK KNOPS SMITH   |
| SAT 10               | PETERBOROUGH           | A   | D2-2  | 4,711    | 280   | 9     | ALNWICK KNOPS SMITH   |
| SAT 17               | GILLINGHAM             | H   | W2-1  | 4,719    | 197   | 5     | ALNWICK KNOPS SMITH   |
| SAT 24               | BRISTOL ROVERS         | A   | L1-2  | 9,088    | 436   | 6     | ALNWICK KNOPS SMITH   |
| TUE 27               | MILLWALL               | H   | W3-1  | 3,934    | 196   | 5     | ALNWICK KNOPS SMITH   |
| <b>OCTOBER 2016</b>  |                        |     |       |          |       |       |                       |
| SAT 1                | COVENTRY CITY          | H   | L0-2  | 5,605    | 604   | 6     | ALNWICK BROWN SMITH   |
| TUE 4                | MANSFIELD TOWN (CT)    | H   | L0-1  | 1,025    | 61    | -     | SANTOS KFD SMITH      |
| SUN 9                | MK DONS                | A   | W1-0  | 8,259    | 292   | 4     | ALNWICK KNOPS SMITH   |
| SAT 15               | SHEFFIELD UNITED       | A   | L0-4  | 19,699   | 721   | 7     | ALNWICK KNOPS SMITH   |
| TUE 18               | CHARLTON ATHLETIC      | H   | D1-1  | 3,494    | 253   | 6     | ALNWICK KNOPS SMITH   |
| SAT 22               | OXFORD UNITED          | H   | D2-2  | 4,837    | 606   | 7     | ALNWICK TAYLOR SMITH  |
| SAT 29               | BOLTON WANDERERS       | A   | L1-3  | 13,937   | 1,152 | 11    | ALNWICK KNOPS SMITH   |
| <b>NOVEMBER 2016</b> |                        |     |       |          |       |       |                       |
| SAT 5                | STEVENAGE (EFAC1)      | H   | W1-0  | 3,093    | 173   | -     | ALNWICK KNOPS SMITH   |
| TUE 8                | DONCASTER ROVERS (CT)  | A   | D0-0* | 1,495    | 92    | -     | SANTOS TURNER SMITH   |
| SAT 12               | FLEETWOOD TOWN         | H   | W2-1  | 3,890    | 112   | 6     | ALNWICK TAYLOR SMITH  |
| SAT 19               | CHARLTON ATHLETIC      | A   | L0-2  | 8,992    | 473   | 11    | ALNWICK TAYLOR SMITH  |
| TUE 22               | OLDHAM ATHLETIC        | H   | D2-2  | 3,152    | 148   | 12    | ALNWICK TAYLOR SMITH  |
| SAT 26               | SHREWSBURY TOWN        | A   | D0-0  | 5,429    | 792   | 12    | ALNWICK TAYLOR SMITH  |
| <b>DECEMBER 2016</b> |                        |     |       |          |       |       |                       |
| SUN 4                | HARTLEPOOL (EFAC2)     | H   | W4-0  | 3,514    | 213   | -     | ALNWICK TAYLOR SMITH  |
| SAT 10               | NORTHAMPTON TOWN       | H   | L2-3  | 4,739    | 213   | 15    | ALNWICK TAYLOR SMITH  |
| SAT 17               | AFC WIMBLEDON          | A   | L0-4  | 4,291    | 261   | 17    | ALNWICK TAYLOR SMITH  |
| MON 26               | WALSALL                | H   | L0-1  | 5,854    | 838   | 17    | ALNWICK TAYLOR SMITH  |
| FRI 30               | CHESTERFIELD           | H   | W1-0  | 4,027    | 372   | 17    | ALNWICK TAYLOR SMITH  |
| <b>JANUARY 2017</b>  |                        |     |       |          |       |       |                       |
| MON 2                | OLDHAM ATHLETIC        | A   | D0-0  | 3,451    | 432   | 15    | ALNWICK PURKISS SMITH |
| SAT 7                | HUDDERSFIELD T (EFAC3) | A   | L0-4  | 11,715   | 1,580 | -     | ALNWICK PURKISS SMITH |
| FRI 20               | BURY                   | H   | D2-2  | 4,338    | 405   | 15    | BOOT PURKISS SMITH    |
| SAT 28               | SCUNTHORPE UNITED      | A   | L2-3  | 4,421    | 731   | 18    | ALNWICK PURKISS SMITH |
| <b>FEBRUARY 2017</b> |                        |     |       |          |       |       |                       |
| SAT 4                | PETERBOROUGH           | H   | L0-3  | 4,259    | 270   | 19    | FASAN PURKISS SMITH   |
| SAT 11               | GILLINGHAM             | A   | D1-1  | 4,942    | 129   | 19    | FASAN PURKISS SMITH   |
| TUE 14               | MILLWALL               | A   | L0-2  | 7,032    | 122   | 20    | FASAN PURKISS SMITH   |
| SAT 18               | BRISTOL ROVERS         | H   | D1-1  | 4,460    | 765   | 21    | FASAN PURKISS SMITH   |
| SAT 25               | BRADFORD CITY          | H   | L1-2  | 4,953    | 1,150 | 21    | FASAN PURKISS SMITH   |
| <b>MARCH 2017</b>    |                        |     |       |          |       |       |                       |
| SAT 4                | SOUTHEND UTD           | A   | D1-1  | 7,545    | 190   | 22    | FASAN PURKISS SMITH   |
| SAT 11               | SWINDON TOWN           | H   |       |          |       |       |                       |
| TUE 14               | NORTHAMPTON            | A   |       |          |       |       |                       |
| FRI 17               | SHREWSBURY             | H   |       |          |       |       |                       |
| TUE 21               | COVENTRY CITY          | A   |       |          |       |       |                       |
| TUE 28               | MK DONS                | H   |       |          |       |       |                       |
| <b>APRIL 2017</b>    |                        |     |       |          |       |       |                       |
| SAT 1                | AFC WIMBLEDON          | H   |       |          |       |       |                       |
| SAT 8                | CHESTERFIELD           | A   |       |          |       |       |                       |
| FRI 14               | SHEFFIELD UTD          | H   |       |          |       |       |                       |
| MON 17               | OXFORD UTD             | A   |       |          |       |       |                       |
| SAT 22               | BOLTON                 | H   |       |          |       |       |                       |
| SUN 30               | FLEETWOOD TOWN         | A   |       |          |       |       |                       |
| TBC                  | ROCHDALE               | A   |       |          |       |       |                       |
| TBC                  | WALSALL                | A   |       |          |       |       |                       |

\* Won 4-3 on penalties







GREAT JUST  
GOT GREATER



## CASH OUT ↻ BOOST

GET A CHANCE OF CASH  
BONUSES WHEN YOU  
CASH OUT YOUR BET

**BETTING, BETTER**

WHEN THE **FUN** STOPS **STOP**

[gambleaware.co.uk](http://gambleaware.co.uk)

18+

Offer applies to new Sky Betting and Gaming customers only. T&Cs apply. Visit [skybet.com](http://skybet.com) for more information.



LESS  
TAKE  
MORE  
GIVE



**sky BET**

**£20 FREE BET** 

WHEN YOU BET £5

NEW CUSTOMER OFFER

**BETTING, BETTER**

WHEN THE **FUN** STOPS 

[gambleaware.co.uk](http://gambleaware.co.uk)

18+

Offer applies to new Sky Betting and Gaming customers only. T&Cs apply. Visit [skybet.com](http://skybet.com) for more information.





## PORT VALE

Caretaker Manager:  
**MICHAEL BROWN**

|                       |    |
|-----------------------|----|
| DENIZ MEHMET          | 01 |
| BEN PURKISS           | 02 |
| ADAM YATES            | 03 |
| REMIE STREETE         | 04 |
| KJELL KNOPS           | 05 |
| SAM KELLY             | 07 |
| PAULO TAVARES         | 08 |
| RIGINO CICILIA        | 09 |
| JJ HOOPER             | 10 |
| SAM FOLEY             | 11 |
| DANNY PUGH            | 12 |
| AXEL PROHOULY         | 13 |
| JEROME THOMAS         | 14 |
| ANTON FORRESTER       | 15 |
| CHRISTOPHER MBAMBA    | 16 |
| MICHAEL BROWN         | 17 |
| DAN TURNER            | 18 |
| SCOTT TANSER          | 19 |
| FRANCISCO ROSA (KIKO) | 20 |
| QUENTIN PEREIRA       | 21 |
| RYAN LLOYD            | 22 |
| RYAN BOOT             | 23 |
| NATHAN SMITH          | 24 |
| CALLUM GUY            | 25 |
| TYLER WALKER          | 26 |
| SEBASTIEN AMOROS      | 27 |
| ANTHONY DE FREITAS    | 28 |
| GEZIM SHALAJ          | 30 |
| BILLY REEVES          | 31 |
| HARRY PICKERING       | 32 |
| JAMES GIBBONS         | 34 |
| LEONARDO FASAN        | 38 |
| CHRIS EAGLES          | 44 |
| OLAMIDE SHODIPO       | 46 |
| SAM JOHNSON           | 50 |

GOALKEEPERS  
OUT ON LOAN

## MATCH OFFICIALS



### REFEREE:

GEOFF ELTRINGHAM



### REFEREE ASSISTANTS:

JAMES MAINWARING  
ADAM MATTHEWS



### FOURTH OFFICIAL:

GRAHAM HORWOOD

## NEXT AT HOME



sky BET LEAGUE ONE EFL

## SHREWSBURY TOWN

FRIDAY 17TH  
MARCH 2017

KICK-OFF: 7:45PM

VALE PARK

EFL SKYBET LEAGUE ONE

## NEXT AWAY



sky BET LEAGUE ONE EFL

## NORTHAMPTON TOWN

TUESDAY 14TH  
MARCH 2017

KICK-OFF: 7:45PM

SIXFIELDS STADIUM

EFL SKYBET LEAGUE ONE



## SWINDON TOWN

First Team Coach:  
**LUKE WILLIAMS**

|    |                          |
|----|--------------------------|
| 01 | LAWRENCE VIGOUROUX       |
| 02 | NATHAN THOMPSON          |
| 03 | BRANDON ORMONDE-OTTEWILL |
| 04 | CONOR THOMAS             |
| 05 | ANTON RODGERS            |
| 06 | JAMIE SENDLES-WHITE      |
| 07 | BEN GLADWIN              |
| 08 | YASER KASIM              |
| 09 | JONATHAN OBIKA           |
| 10 | JOHN GODDARD             |
| 11 | JAMES BROPHY             |
| 12 | WILL HENRY               |
| 14 | ELLIS IANDOLO            |
| 16 | JORDAN STEWART           |
| 17 | ISLAM FERUZ              |
| 19 | NICKY AJOSE              |
| 20 | CHARLIE COLKETT          |
| 21 | FANKATY DABO             |
| 22 | JESSE STARKEY            |
| 23 | ROHAN INCE               |
| 24 | JERMAINE HYLTON          |
| 25 | DION CONROY              |
| 27 | BRAD BARRY               |
| 28 | LLOYD JONES              |
| 29 | RAPHAEL ROSSI BRANCO     |
| 33 | LUKE NORRIS              |
| 35 | JORDAN YOUNG             |
| 33 | NIAH PAYNE               |
| 34 | TOM WINDLE               |
| 35 | SAM WRIGHT               |

GOALKEEPERS

## TODAY'S SPONSORS

MATCH

MATCH BALL

Sovereign

onevalefan

Smoking is not permitted anywhere inside Vale Park and to smoke you need to be outside the stadium in the Main Car Park



Port Vale Football Club would like to remind all supporters to refrain from racist, homophobic or discriminative chanting.



/OfficialPVFC



OFFICIALPORTVALE



CommercialPVFC



officialpvfc/



officialportvalefc